



EUROPE & AFRICA CONFEDERATION

2019 TOURNAMENT ADDITIONAL RULES

Version 1 issued by Europe & Africa TC, 28th March 2019

RULES SHOWN IN RED HAVE BEEN UPDATED

1. Europe & Africa Technical Rules

1a. E&A Regulations for Under 12 Categories

2. Europe & Africa Open Championships Rules

3. Europe & Africa Youth Championships

4. Europe & Africa Under 21 Championships

5. Europe & Africa 35+ Championships

6. Mediterranean Games

6a. Mediterranean Beach Games

7. Registration of Homologated Competitions

8. Officials Qualifications

9. World, E&A Titled Events – Officials Qualifications

10. Level 1 Judges (J1)

11. Level 2 Judges (J2 – J2*)

12. Skier fast track Option

13. Level 1 Homologator (H1)

14. Level 2 Homologator (H2)

15. Level 1 Scorer (S1)

16. Level 2 Scorer (S2)

17. Level 1 Drivers (D1)

18. Level 2 Drivers (D2)

19. Official Seminar

20. Level 3 Officials (J3, J3*, D3, D3*, S3 and H3)

21. Homologation of competitions

22. Normal Homologation

23. Record Capability and Ranking List Homologation

24. Europe & Africa Records

25. Europe & Africa Championships Best Performances

26. Europe & Africa Ranking Lists

27. Medals and Titles

28. Europe & Africa Policies and Procedures

29. Boat Testing and Eligibility

30. Disciplinary Procedures

Appendix A – Championships Overall Formulas

Appendix B – Ranking List Overall Score Basis and Formulas

Appendix C - Advice To Federations for National Officials

Appendix E – List of Approved Speed Control Systems

Appendix F – End Course Monitoring

Appendix G – File Uploading System

Appendix H – Administration and Homologation reporting

1. Europe & Africa Technical Rules

1.1. General

- a. The IWWF Technical Rules for Water Ski Tournaments and these Additional Rules apply to the Europe & Africa Championships and to all other homologated competitions in Europe & Africa, unless varied elsewhere in the Additional Rules. Where the words "World" or "IWWF" appear in the IWWF Technical Rules these are to be read as "Europe & Africa". Where the words "Confederation" or "Confederations" appear, these are to be read as "Federation" or "Federations".
- b. The Organisers of homologated competitions, other than those titled competitions where specific Additional Rules apply, may make variations from the IWWF Technical Rules and the Additional Rules that do not affect the recorded scores of the competitors or the homologation of the competition. Examples of acceptable variations are those to entry requirements, familiarisation, method of draw, number of events or rounds, numbers in finals, method of determining event placement and/or overall and Team placement. The organising Federation is responsible for notifying the TC of significant variations, which could affect the acceptability of the competition for the Europe & Africa Calendar or the homologation of the competition. The TC is the sole arbiter as to whether any variations are acceptable.
- c. Organisers Technical Set Up – Organisers of an event must take charge of the technical equipment set up, such as video jump, video gates, video tricks, end course video, etc. These installations will be submitted for review to the Homologator to check, who has the responsibility for the accuracy of the technical equipment installed. It is NOT the responsibility of the Homologator to install the technical equipment. It is recommended that organisers appoint a Technical Officer to be responsible for all the equipment installations.
- d. The appointed officials for all competitions must be on site during the whole of the competition.

1.2. Amendments

(replaces IWWF Rule 1.05)

The TC may make amendments to the Additional Rules at any time and decide on which date they become effective.

1.3. Number of skiers in the finals

(replaces IWWF Rule 2.02)

Each event shall consist of two rounds - a Preliminary and a Final round.

All skiers qualified to ski in an event must ski in the Preliminary round of that event.

A skier may not ski in the Final round of an event if he/she scored zero in the Preliminary Round.

The number of skiers qualified to ski in the Final round of an event shall be as shown in the following table:

Number of skiers entered and paid to ski in the Preliminary round (as at midday the day before competition)	Number of skiers in Final
1-5	All
6-10	first 5
11-12	first 6
13-15	first 8
16-19	first 10
20 or more	first 12

Ties.

In the case of a tie for any position which may result in more than the prescribed number of skiers going through to the final round there will be a run off between the tied skiers so that only the prescribed number of skiers go into the finals.

The run-off score(s) shall not be used for the Final Round starting list (where all those tied skiers shall be drawn randomly). Nor shall the first round run-off scores be used to place the skier in the finals. If the skiers are tied on scores from the final round and the preliminary round, then they shall

remain tied in the final results. EXCEPT that IWWF Rules 13.13, 14.10 and 15.18 shall be adhered to in terms of medal places.

1.3a Entry and Administration

(replaces part of IWWF Rule 2.5)

Each Federation shall certify to the E&A Central Office and to the Organizing Committee, not later than 60 days before the scheduled start of the first event of any E&A Championships, its intent to compete. Any Federation not meeting this requirement will not be allowed to compete until they pay a fine of 200 € to the E&A Confederation.

Each Federation shall certify to the E&A Central Office and to the Organizing Committee, not later than fifteen (15) days before the scheduled start of the first event of the Championships:

The names of the members of its team, the events each will enter, the ratings of each skier, as well as the names of the official reserves.

The names of the individuals, if any, the events each will enter, the ratings of each skier.

The names of the wild card, if any, the events each will enter, the ratings of each skier.

Any Federation not meeting this requirement will not be allowed to compete until the Federation pays a fine of 10 Euro per skier per day after the 15 days deadline to the E&A Confederation for each skier not officially entered.

If the official entry forms are not received prior to the 24 hours before the start of the first event, the Federation's skier's places in the draw shall be determined by the Chief Judge without reference to their qualifying scores. There is no limit on official reserves per team.

The day before the start of a preliminary round the entry list shall be closed at 12 noon and thereafter the order of contestants entered and paid will be finalised and posted. No change in this order is allowed except that a team representative may:

- Withdraw a skier from the competition.
- Replace, with the authority of the Chief Judge and before the start of the first event, that is to say before the first skier taking part in the first event has started, an injured skier by a qualified official reserve from the same team.
- The substitute skier shall start first in the seed in which he is qualified unless the draw has not yet been completed.

For all E&A Championships

REPLACE "The skiers will then be divided into groups and the start list will be made using reverse order of the ranking list scores".

WITH "The skiers will then be divided into groups and each group shall be then randomly drawn separately".

1.4. Overall calculation

At Europe & Africa Championships in all age categories the Overall Scoring (if applicable) will be calculated per the relative IWWF rulebook formulas.

(Refer to appendix "A" and "B" for the overall standards and related calculation formulas)

If for any reason another system is to be used this must be notified in the regulations of the competition.

1.5. Europe & Africa Championships appointed officials

(replaces first four paragraphs of IWWF Rule 6.01 and IWWF Rule 6.02)

The Bureau of Europe & Africa will appoint the Officials for each Europe & Africa Championships after receiving proposals from the TC. The number of officials for each Championship is shown under each Championship heading.

1.6. Event judges

(replaces IWWF Rule 6.03)

The Officials for each event shall be chosen by the Chief Judge from among the Appointed Panel. As far as possible the Event Judges shall be from different Federations.

1.7. Boats

(addition to IWWF Rule 10.01 e)

For practical reasons, only one make and model of boat will normally be chosen.

1.8. Best jump distance

(addition to IWWF Rule 10.07 g)

In the Europe & Africa Individual Championships & the Europe & Africa Under 21 Championships Series 1 skiers are allowed to use the World Record distance as their best.

1.9. Slalom results

These must show the official minimum start speed and rope length of the round of the event and the number of buoys scored by each skier on his last pass showing the speed and rope length.

1.10. Jump course buoy colours

(see IWWF Rules Diagram 2)

At sites where the Jump and Slalom courses are integrated the Homologator may accept different colours for the jump course buoys from those listed under Diagram 2 of the IWWF Rules.

1.11. End Course Video

(addition to IWWF Rule 14.15)

For all Record Capability and Ranking List homologated events the end course video **for all passes must be displayed on the officials tower, monitored throughout the event, recorded and submitted to the E&A TC for analysis.** ~~MUST be displayed on the Officials Tower and MONITORED throughout the event.~~

1.12. Video

All video footage becomes the property of Europe & Africa Confederation and shall be kept in the custody of the Chief Judge during the competition. The videos required are the originals from the boat camera in tricks and the end course camera in slalom (not copies made on the tower). Video will be recorded on digital media and files for trick, must be .avi type. Analogue VHS media is no longer accepted.

For all RL & RC competitions, all End Course Slalom videos **for all passes** must be submitted to the E&A TC.

In addition, for titled and elite events, Jump End Course and Trick videos should also be submitted to the E&A TC.

It is the responsibility of the Chief Judge and Organiser to ensure that ~~submits these videos~~ **all the videos are submitted** to the E&A TC within 30 days from the end of the competition. Failure to send the video after October 31st, will result in the site not being permitted to hold an Homologated event the following year.

~~There are 2 ways to do submit the video to the TC:~~

- ~~1) The organiser can upload the files directly to the E&A storage server. This is a straight forward solution and is the preferred option. A step by step guide on how to do this can be found in Appendix G.~~
- ~~2) The second option is to mail the physical media directly to Donal Connolly who will upload the footage to the server. Please send media to: Donal Connolly, Chateau de Poudelay, 09230 Fabas, France~~

Trick Videos and Jump End Course Videos can be submitted to the TC in 2 ways:

- 1) The files can be uploaded directly to the E&A storage server. This is a straight forward solution and is the preferred option. A step by step guide on how to do this can be found in Appendix G.**
- 2) The physical media can be sent directly to the TC. Please send media to:
Donal Connolly, Chateau de Poudelay, 09230 Fabas, France**

**Slalom End Course Videos MUST be physically sent by mail to the TC. Please send media to:
Donal Connolly, Chateau de Poudelay, 09230 Fabas, France**

1.13. End Course Pictures

Before the start of the Slalom event, the Homologator must take a picture of the monitor on the Jury tower where the end course is displayed. The picture must also include the edges of the monitor, so that the gate size ratio can be calculated.

The picture has to be emailed to endcourse@splasheye.com in the subject line enter the competition code.

It is the responsibility of the Homologator to physically make and send the end course picture before the start of the competition. The Homologator who fails to do so may incur in a Disciplinary Procedure as described in art. 27.

1.14. Jump boat path video

(Addition to IWWF Rule 13.08a)

The boat path video camera must be operated from a point on the centreline of the jump course, mounted so the boat is coming towards the camera during a jump.

The camera should be adjusted to show all of the boat buoys in clear focus and be equipped with optical magnification of sufficient power to display the start time buoys occupying at least 1/6th of the width of the full screen (1/3rd width or larger is recommended).

It is recommended that the end course video be monitored from the tower and any driving corrections needed to be communicated to the driver.

1.15. RTB mode in jumping

(Addition to IWWF Rule 13.04)

If a skier chooses to jump using RTB or 3 segment timing all of the jumps of that round must use the same mode. The skier may not change the mode between jumps.

1.16. Skier category decision

A skier may only compete in one category at a competition. For example, a Senior skier may compete either as a Senior OR as an Open skier, but NOT BOTH at the same competition.

1.17. Rounds

The maximum number of rounds which can count for the rankings list or records is limited to 4 at any one competition - meaning consecutive days at the same site.

For L & R Homologation purposes, a tournament or tournaments with an allowed maximum of 4 rounds (in each of slalom, tricks and jump) must be followed by 3 whole days before the next tournament can start at the same site code.

2 competitions of two round each meet the criteria of this rule.

1.18. Official Familiarisation

Replace IWWF rule 1.12

The last two or three days immediately before the Championships will be reserved and used for Official Familiarization. This will be organized so that each competitor who has paid shall be allocated either a set number of passes and/or a certain amount of time at the discretion of the Chief Judge based on the principle that every skier shall receive an equal opportunity for familiarization.

Slalom skiers will receive – 4 passes or 6 minutes whichever is less

Tricks skiers will receive – 2 passes or 5 minutes whichever is less

Jump skier will receive – 3 passes or 6 minutes whichever is less

Each team requesting familiarization time shall indicate on the official Intention to Enter form, familiarization is required, which must be submitted at least 60 days before the scheduled start of the event. They must indicate how many skiers in each event wish to participate. Teams who do not comply with this deadline will not be included in the familiarization schedule. At least 45 days before the scheduled start of the event, the Organizer (in consultation with the Chief Judge, whose decision shall be final) shall announce the official familiarization schedule (including the allowed time). Time will be scheduled for competitors on a random team basis, and shall be grouped by event, i.e. slalom familiarisation, trick familiarisation and jump familiarisation (by jump height) will be grouped together. Any athlete whose time has not been paid for at least 30 days before the scheduled start of

the event, or who is not ready to ski in accordance with the schedule, will lose their official familiarization time.

Summary table:

60 days before - deadline for familiarization requests

45 days before - deadline for publishing familiarization schedule by Organizer

30 days before - deadline for familiarization payment

The Chief Judge shall have the discretion to change the start time of team's familiarization based on extraordinary circumstances.

The Organizer may offer additional training during any unallocated times.

The maximum cost per hour for Official familiarisation will be € 240,00 (€ 4,00 per minute).

1.19 Boat path in Jump

The jumper should tell the boat driver at which distance and at what speed to pass the ramp. The boat shall follow a straight path, parallel to or through the jump course at the specified distance from the right hand side of the ramp.

1.20 Current Year E&A Ranking List

Wherever the words "current year E&A Ranking List" appear, it relates to the last approved Ranking List which is computed annually on the 31st October.

These lists are calculated from results achieved up until October 31st each year. There are no interim lists which can be applied.

Example:

The current Year Ranking List for 2017, is the list approved at 31st October 2016 and includes all scores achieved from November 1st 2015 to October 31st 2016.

NOTE: See Europe & Africa Bye-Laws, Rules of Eligibility and List of Obligations for other relevant information and requirements.

1a. E&A Regulations for Under 12 Categories

Replace part of IWWF Appendix D

1.A.1 General

For safety reasons and harmonisation of age categories, for the Under-12 categories the following rules apply:

1.A.2 Eligibility

Skiers eligible are Boys and Girls in the age categories listed below.

Under 12

The maximum age of any boys/girls entering in this category is 11 years as of December 31, preceding the tournament. This means that the last year of eligibility of a skier is the year in which he has his 12th birthday.

1A.3 Jump speeds and ramp heights

Under 12		
Girls	45 kph	1,35m or 1,50m
Boys	45 kph	1,35m. or 1,50m

1A.4 Description of the Jump Ramp

- a) Width: 3.70m to 4.30m at all points. 4.20m to 4.25m is recommended.
b) Length out of water at all points.

Length out of water table			
Ramp Ratio	Minimum	Maximum	Recommended
0.215	6.40m	7.10m	6.80m-7.00m
0.235	6.40m	7.10m	6.80m-7.00m

c) **For safety reasons, it is mandatory that the length under water is at least 50 cm.**

d) Ratio of ramp height at take off edge to ramp length out of water:

- **0.215 +0.003/-0.005. Ramp max height is limited to 1.505**
- **0.235 +0.003/-0.005. Ramp max height is limited to 1.645**

Ratios are to be computed on both sides of the ramp, and the ramp height at the take-off edge at the two corners may differ by no more than 2.5 cm.

Ramp setting must be within the indicated tolerances in the Ramp Setting Chart (see IWWF rules).

1A.5 Jump timing chart

RTB Mode (return to baseline)

Speed	1st+2nd Segment (82 mt)			3rd segment (41 mt)		
	fast	actual	slow	fast	actual	slow
48	6.05	6.15	6.25	2.84	3.08	3.17
45	6.45	6.56	6.68	3.01	3.28	3.39
42	6.90	7.03	7.17	3.21	3.51	3.64
39	7.42	7.57	7.73	3.43	3.78	3.94
36	8.02	8.20	8.39	3.69	4.10	4.28
33	8.73	8.95	9.17	3.99	4.47	4.69
30	9.58	9.84	10.11	4.34	4.92	5.18
27	10.62	10.93	11.27	4.76	5.47	5.79

1A.6 Slalom starting speed/shortening speed

Under 12		
Girls	25 kph,	shorten @ 52 kph
Boys	25 kph,	shorten @ 52 kph

1A.7 Slalom boat times

Speed	Score:	0-0.50	1-1.50	2-2.50	3-3.50	4-4.50	5-5.50	All 6
Kph	Fm/To:	E-1	E-2	E-3	E-4	E-5	E-6	E-X
52	Fast	1.83	4.62	7.43	10.24	13.05	15.87	17.72
	Ideal	1.87	4.71	7.55	10.38	13.22	16.06	17.93
	Slow	1.91	4.78	7.65	10.52	13.39	16.25	18.13
49	Fast	1.94	4.90	7.87	10.85	13.83	16.81	18.78
	Ideal	1.98	5.00	8.01	11.02	14.03	17.04	19.03
	Slow	2.03	5.08	8.13	11.18	14.22	17.27	19.27
46	Fast	2.06	5.21	8.37	11.54	14.71	17.88	19.98
	Ideal	2.11	5.32	8.53	11.74	14.95	18.16	20.27
	Slow	2.16	5.42	8.68	11.93	15.18	18.42	20.56
43	Fast	2.20	5.56	8.94	12.33	15.71	19.10	21.34
	Ideal	2.26	5.69	9.13	12.56	15.99	19.42	21.68
	Slow	2.32	5.81	9.30	12.78	16.27	19.75	22.03
40	Fast	2.36	5.97	9.60	13.23	16.86	20.50	22.89
	Ideal	2.43	6.12	9.81	13.50	17.19	20.88	23.31
	Slow	2.50	6.26	10.02	13.78	17.53	21.27	23.74
37	Fast	2.54	6.44	10.35	14.27	18.19	22.11	24.70
	Ideal	2.63	6.62	10.61	14.59	18.58	22.57	25.20
	Slow	2.71	6.79	10.86	14.93	18.99	23.06	25.73
34	Fast	2.76	6.99	11.24	15.49	19.74	23.99	26.81
	Ideal	2.86	7.20	11.54	15.88	20.22	24.56	27.42
	Slow	2.95	7.41	11.85	16.29	20.73	25.16	28.08
31	Fast	3.02	7.65	12.29	16.93	21.58	26.24	29.31
	Ideal	3.14	7.90	12.66	17.42	22.18	26.94	30.08
	Slow	3.25	8.15	13.05	17.93	22.82	27.70	30.90
28	Fast	3.33	8.43	13.55	18.68	23.81	28.94	32.33
	Ideal	3.47	8.74	14.01	19.29	24.56	29.83	33.30
	Slow	3.61	9.07	14.51	19.94	25.37	30.80	34.37
25	Fast	3.71	9.40	15.11	20.83	26.54	32.26	36.04
	Ideal	3.89	9.79	15.70	21.60	27.50	33.41	37.30
	Slow	4.07	10.21	16.34	22.46	28.58	34.68	38.70

1A.8 Overall Score Basis and Formulas

Please refer to appendix "B" for overall score basis and formulas

To qualify for an overall score, an Under-12 competitor must score at least 20 points in tricks, 1/4 buoy in slalom and have one scoring jump.

2. Europe & Africa Open Championships Rules

2.1. Championships frequency

(replaces IWWF rule 1.02)

The Championships shall be held annually.

2.2. Championships format

The E&A Open Championships shall consist of two rounds in each event - a Preliminary and a Final round.

2.3. Skier qualification

Each Federation which is affiliated with Europe & Africa shall have the right to select a team of skiers to represent their Federation in the Europe & Africa Championships. The team shall consist of a maximum of six skiers, with the further limitation that no team may have more than four men or four women.

Skiers not selected for their national teams may qualify to compete in the Europe & Africa Championships as individuals only in the relevant event(s) if they meet one or more of the following criteria:

1. Europe & Africa record holder. The performance must have been ratified by the Tournament Council 30 days before the first day of the Europe & Africa Championships.
2. Reigning Europe & Africa Champion in any event or the overall from the previously held Europe & Africa Championships.
3. Reigning World Champion in any event or the overall from the previously held World Championships.
4. Skiers placed in the top X places (as shown below) on the different Ranking Lists

	1	2	3	4	5	6
Men Slalom	8	6	20	16	14	11
Women Slalom	8	6	15	12	10	8
Men Tricks	8	6	20	16	8	6
Women Tricks	8	6	15	12	8	6
Men Jump	8	6	20	16	12	9
Women Jump	8	6	15	12	8	6
Men Overall	5	4	10	8		
Women Overall	5	4	10	8		

- 1) Current Year E&A Ranking List
- 2) Previous Year E&A Ranking List
- 3) E&A skiers placed in the top X skiers from the latest November IWWF Ranking List
- 4) E&A skiers placed in the top X skiers from the previous November IWWF Ranking List
- 5) Europe & Africa skiers placed in the top X skiers of the Elite List 30 days prior to the Championships
- 6) Europe & Africa skiers placed in the top X skiers of the Elite List 1 year and 30 days prior to the Championships

2.4. Ranking the skiers for division into series:

Skier are ranked using their best placement from the following lists:

Current year E&A Ranking List

Previous year E&A Ranking List with a 25% penalty

Examples:

Skier	Current year R.L.	Previous year R.L.	Entry Seed
A	10	4 (x1.25=5)	5
B	12	10 (x1.25=12.5)	12
C	25	8 (x1.25=10)	10

Skiers with no performances on those lists list will be subject to a random draw in the lowest series.

The number on the previous year's Ranking List will be used with a 25% penalty.

Establishment of seeding for the top 5 overall men and women

The top 5 overall men and the top 5 overall women attending the championships, and obtained as above, (comparing the 2 years Ranking List), shall all ski in the same seed group in each event.

The appropriate seed group for each event will be determined by taking the seed group of the highest placed top 5 overall skier and placing all 5 in that same series in addition to the original group size.

Establishment of seeding for other individually qualified overall skiers who are not on the single event ranking list

An overall skier may have an overall ranking, but not be on the event list. In this case the performance level will be used to pick the seed number. If it is from the previous year, the same 25% penalty shall apply. This will determine the seed group. That skier will be added to that seed group as the first skier on the water from that group.

2.5. Team skier qualification standards

This is taken from the IWWF Technical Rules

a. One Event Qualification

Each skier entering only one event (except those competing under Rule 2.5 d.) shall have in his possession a rating card showing at least the following skiing classification in the event which he enters:

	Slalom	Tricks	Jump
Women	6 @ 55/13m	4000	34m
Men	6 @ 58/13m	5500	49m

b. Two Event Qualification

Each skier entering at least two events (except those competing under Rule 2.5 d.) shall have in his possession a rating card showing at least the following skiing classification in each event which he enters:

	Slalom	Tricks	Jump
Women	6 @ 55/16m & 4 @ 55/14.25m	3200	31m
Men	6 @ 58/16m & 4 @ 58/14.25m	4000	43m

c. Three Event Qualification

If a skier is qualified under 2.05 b. to compete in two events, he shall be allowed to compete in the third event if he possesses a valid rating card showing at least the following skiing classification in the third event.

	Slalom	Tricks	Jump
Women	6 @ 55/18.25m	2300	25m
Men	6 @ 58/18.25m	3000	36m

d. Minimum Team Qualification

Each Federation shall be entitled to a team of three competitors, male or female, whether qualified under rules 2.5 a. b. or c. or not. Such a skier who is qualified in only one event or not qualified in any event may compete in only two events.

A Federation organising the Europe & Africa Championships shall be entitled to a team of six competitors, whether qualified or not. They may compete in one, two or all three events.

2.6. Wild card

Each Federation shall be entitled to enter 5 competitors, male or female, as wild card skiers.

Those skiers must have a minimum qualification score as per IWWF rule 2.5. If qualified, they may compete in one, two or all three events. They are not members of the team and their scores will not be considered for the team score.

2.7. Proof of qualifications

(addition to IWWF Rule 2.05)

For seeding purposes, the current year's E&A Ranking List score will be used.

If no ranking list score is available, then proof of qualification scores is required at the time the entry form is submitted and the skier will be included in the lowest series.

The Europe & Africa TC will produce an alphabetic skier scoring list throughout the season. This list may be consulted to provide proof of qualification if no other proof is available. However, it is noted that the responsibility for proof of qualification is with each Federation and NOT with the Europe & Africa TC, the Chief Judge or the Scorer.

2.8. Changing jump ramp heights

Copy of IWWF Rule 13.01

- a. Women jumpers will have the option of choosing either a height of 1.50m or 1.65m (see IWWF Rule [13.02d](#)). To be eligible to jump at 1.65m the skier must have achieved a score of 38m at the 1.50m height in a homologated tournament as certified by their Federation.
- b) Men jumpers will have the option of choosing either a height of 1.50m or 1.65m. or 1.80m (see Rule [13.02d](#)). To be eligible to jump at 1.65m the skier must have achieved a score of 38m at the 1.50m height in a homologated tournament as certified by their Federation. To be eligible to jump at 1.80m the skier must have achieved a score of 48m at the 1.65m height in a homologated tournament as certified by their Federation.

2.9. Overall and Team Competition

IWWF rule 5 applies

For the formulas, please refer to appendix “A”

2.10. Appointed officials

The Bureau of Europe & Africa will appoint the following Officials after receiving proposals from the TC:

A Chief Judge, an Assistant Chief Judge, 6 Judges, an Homologator, a Scorer, an Assistant Scorer, and 2 Drivers.

The organisers shall appoint a Technical Officer and notify Europe & Africa TC of the person so appointed.

NOTE: See Europe & Africa Bye-Laws, Rules of Eligibility and List of Obligations for other relevant information and requirements.

3. Europe & Africa Youth Championships

3.1. General

The Europe & Africa Under 17 Championships and Under 14 Championships shall be held annually.

3.2. Eligibility

Skiers eligible for these competitions are Boys and Girls in the age categories listed in a) and b) below.

a. Under 14

The maximum age of any boys/girls entering in this category is 13 years as of December 31, preceding the tournament. This means that the last year of eligibility of a skier is the year in which he has his 14th birthday.

b. Under 17

The maximum age of any boys/girls entering in this category is 16 years as of December 31, preceding the tournament. This means that the last year of eligibility of a skier is the year in which he has his 17th birthday.

c. Under 14s may be entered by their Federations as Under 17s.

d. A skier shall not be entered in both Under 14 and Under 17 categories.

3.3. Teams

Each Federation may enter in the Under 14 Championships a Team composed of a maximum of 4 skiers, with a maximum of 3 of the same sex.

Each Federation may enter in the Under 17 Championships a Team composed of a maximum of 4 skiers, with a maximum of 3 of the same sex.

3.4. Events

There shall be three events: Slalom, Tricks and Jumping in each age/sex category.

Individual Overall scoring is from either round.

3.5. Minima for entry

a. Team Skiers

	Slalom	Tricks	Jump
Under 14			
Girls	6 @ 43 kph/18.25m	1000 pts.	12m
Boys	6 @ 46 kph/18.25m	1300 pts.	16m
Under 17			
Girls	6 @ 52 kph/18.25m	1500 pts.	17m
Boys	6 @ 55 kph/18.25m	2000 pts.	25m

These minima must have been achieved in each event in which the skier is entered.

Federations not having skiers (or only one) who have achieved any of these minima shall, nevertheless, have the right to enter 1 skier, Boy or Girl, in the Under 14 Championships and 1 skier, Boy or Girl, in the Under 17 Championships. These skiers may be entered in one, two or all three events.

NOTE: The Federation organising the Championships shall be entitled to a team of six competitors (with a maximum of 4 in one category), whether qualified or not. They may compete in one, two or all three events.

b. Individuals

ELIGIBLE Skiers placed in the top X skiers (as shown below) in the current year's Europe & Africa Ranking List may be entered as individuals by their Federation, to a MAXIMUM number of 8 individual skiers from any one country.

Slalom	Tricks	Jump	Overall
U14 Boys 10	U14 Boys 10	U14 Boys 10	U14 Boys 10
U14 Girls 10	U14 Girls 10	U14 Girls 10	U14 Girls 10
U17 Boys 10	U17 Boys 10	U17 Boys 10	U17 Boys 10
U17 Girls 10	U17 Girls 10	U17 Girls 10	U17 Girls 10

c. Score conversion

- 1) When a skier changes his age category from Under-14 to Under 17, the following conversions will apply:

Slalom: If a skier does not have a score at 58 kph or 55 Kph, his slalom score will be accepted as it is, with a maximum of 6.00@55/18.25 or 6.00@52/18.25.

Jump: A score listed in the Under-14 Ranking List will be accepted as it is.

Tricks: The score will be accepted as it is.

- 2) When a skier has only a score in the age category above his, if needed, the following conversion will apply:

Slalom: Any result made at 58/55 kph becomes the same result at 55/52 kph (example 4.00@58/14.25 equal to 4.00@55/14.25);

Jump: No score can be accepted if not performed under the skier's actual age category rules.

Tricks: The score will be accepted as it is.

The scores obtained will be used to rank the skier in the age category he has entered.

3.6. Entry forms and documentation

- As evidence of the qualification of skiers, Federations must enter the full details on the Entry Forms, including the date and place of the competition(s) in which the required minima were achieved.
- Skiers' proof of nationality must be presented to the Chief Judge or to the Scorer for checking, by 12 noon on the day before the competition starts.
- Federations are held responsible for the accuracy of the information on the entry forms, which must be sent within the stipulated time to both the Europe & Africa Office and the Organisers.
- The checking of skiers' eligibility and qualifications will be done under the responsibility of the Chief Judge before the draw takes place.

3.7. Proof of qualifications

The previous year's E&A Ranking list score of each skier will be used for seeding purposes unless by 12 noon on the day before competition starts, proof of a higher performance in writing is received. Proof must be in the form of a copy of the signed results and can be sent by mail, fax or via the Team Manager. If Federations knowingly submit an incorrect higher score sanctions will be applied.

The Europe & Africa TC will produce an alphabetic skier scoring list throughout the season. This list may be consulted to provide proof of qualification if no other proof is available. However, it is noted that the responsibility for proof of qualification is with each Federation and NOT with the Europe & Africa TC, the Chief Judge or the Scorer.

3.8. Slalom start speeds

Under 14		
Girls	46 kph,	shorten @ 52 kph
Boys	49 kph,	shorten @ 55 kph
Under 17		
Girls	49 kph,	shorten @ 55 kph
Boys	52 kph,	shorten @ 58 kph

The final round start speeds will be decided by the Appointed Judges.

3.9. Jump speeds and ramp heights

Under 14	Maximum speed	Ramp height	Under 17	Maximum speed	Ramp height
Girls	45 kph	1.50m.	Girls	51 kph	1.50m.
Boys	48 kph	1.50m.	Boys	51 kph	1.50m. or 1.65m.

3.10. Ramp height change

- a. Girls shall use the 1.50m. ramp.
- b. Under 17 Boys shall use the 1.50m ramp unless they meet the criteria below.
To be eligible to jump at 1.65m the skier must have achieved a score of 38m at the 1.50m height in a homologated tournament as certified by their Federation.

Skiers who have already achieved the required distances in this rule have no need to provide certified results providing their results are showing in the Ranking List for their age category.

3.11. Finals

Finals shall be held in the Under 14 and Under 17 Championships.

3.12. Overall and Team Competition (replaces IWWF Rules 5)

5.01: Qualification for Individual Overall Scoring

To qualify for an overall score, a competitor must score at least 10 points in tricks, 1/4 buoy in slalom and have one scoring jump.

5.02: Round Selection for Overall Score

Individual overall results shall be calculated on the better score of either the preliminary or the final round for each skier qualified for the individual overall. Scores obtained in running off a tie shall not count towards overall.

5.03 Individual Overall scoring

Each overall competitor shall be awarded in each event a certain number of overall points according to the relationship of his best score in either the preliminary round or the final round to the best score in the event during either round by a skier who is qualified as an overall skier.

The best performance in an event in either round by an overall skier shall be awarded 1000 points and be referred to as the "Best overall skiers score". All other performances shall be calculated according to the formulas in appendix "A"

5.04: Overall Placement

Individual Overall placement is based only on better score of either the preliminary or the final round.

5.05: Team Scoring

The best performance in an event in the preliminary or final round by a team skier shall be awarded 1000 points and be referred to as the "Best Team Score". All other performances shall be calculated according to the formulas in appendix "A" substituting "Best Team Skier's Score" for "Best Overall Skier's Score".

- a. The best three Team scores, Boy or Girl for each Under 17 Team, in each event (in the preliminaries or finals) shall be summed up to obtain the Under-17 Team score.
- b. The best three Team scores, Boy or Girl for each Under 14 Team, in each event (in the preliminaries or finals) shall be summed up to obtain the Under-14 Team score.
- c. The total of the Overall Under 17 Team score and the Overall Under 14 Team score will be used to produce a Combined Team result.

3.13. Officials

The Bureau of Europe & Africa will appoint the following Officials after receiving proposals from the TC:

A Chief Judge, an Assistant Chief Judge, 6 Judges, an Homologator, a Scorer, an Assistant Scorer and **2 Drivers**.

The organisers shall appoint a Technical Officer and notify Europe & Africa TC of the person so appointed.

NOTE: See Additional Rule 1 for other technical rules.

4. Europe & Africa Under 21 Championships

4.1. General

The Europe & Africa Under 21 Championships shall be held annually.

4.2. Eligibility

Skiers eligible for this competition are Men and Women who have not attained 21 years by the 31st December of the preceding year. This means the last year as an Under 21 is the calendar year in which the 21st birthday occurs.

4.3. Teams

Each Federation may enter a Team composed of a maximum of 6 skiers with a maximum of 4 of the same sex.

4.4. Events

There shall be three events: Slalom, Tricks and Jumping.

Individual Overall scoring is from either round.

4.5. Minima for entry

a. Team Skiers

	Slalom	Tricks	Jump
Men	6 @ 58 kph/18.25m	3000	38m
Women	6 @ 55 kph/18.25m	2300	25m

These minima must have been achieved in each event in which the skier is entered.

Federations not having skiers (or only one), who have achieved any of these minima shall nevertheless have the right to enter a Man and a Woman. These skiers may be entered in one, two or all three events.

NOTE: The Federation organising the Championships shall be entitled to a team of 6 competitors, with a maximum of 4 of the same sex, whether qualified or not. They may compete in one, two or all three events.

b. Individuals

ELIGIBLE Skiers placed in the top X skiers (as shown below) in the current year's Europe & Africa Ranking List may be entered as individuals by their Federation:

Slalom	Tricks	Jump	Overall
U21 Men 15	U21 Men 15	U21 Men 15	U21 Men 10
U21 Women 15	U21 Women 15	U21 Women 15	U21 Women 10

c. Score conversion

- 1) When a skier changes his age category from Under-14 or Under 17 to Under-21, if needed, the following conversions will apply:

Slalom: If a skier does not have a score at 58 kph, his slalom score will be accepted as it is, with a maximum of 6.00@55/18.25

Jump: A score listed in the U-14 or in the U-17 Ranking List will be accepted as it is.

Tricks: The score will be accepted as it is.

- 2) When a skier only has a score in the Open category, if needed, the following conversion will apply:

Slalom: The score will be accepted as it is.

Jump: No score can be accepted if not performed under the skier's actual age category rules regarding ramp heights.

Tricks: The score will be accepted as it is.

The scores obtained will be used to rank the skier in the age category he has entered.4.5a.

4.5a. Wild card

Each Federation shall be entitled to enter 5 competitors, male or female, as wild card skiers, whether qualified or not. They may compete in one, two or all three events. They are not members of the team and their scores will not be considered for the team score.

4.6. Entry forms and documentation

- As evidence of the qualification of skiers Federations must enter the full details on the Entry Forms, including the date and place of the competition(s) in which the required minima were achieved.
- Skiers' proof of nationality must be presented to the Chief Judge or to the Scorer for checking, by 12 noon on the day before the competition starts.
- Federations are held responsible for the accuracy of the information on the entry forms, which must be sent within the stipulated time to both the Europe & Africa Office and the Organisers.
- The checking of skiers' eligibility and qualifications will be done under the responsibility of the Chief Judge before the draw takes place.

4.7. Proof of qualifications

The previous year's E&A Ranking list score of each skier will be used for seeding purposes unless by 12 noon on the day before competition starts proof of a higher performance in writing is received. Proof must be in the form of a copy of the signed results and can be sent by mail, fax or via the Team Manager. If Federations knowingly submit a wrong higher score sanctions will be applied. The Europe & Africa TC will produce an alphabetic skier scoring list throughout the season. This list may be consulted to provide proof of qualification if no other proof is available. However, it is noted that the responsibility for proof of qualification is with each Federation and NOT with the Europe & Africa TC, the Chief Judge or the Scorer.

4.8. Slalom start speeds

Preliminary round	Men 58 kph/18.25m	Women 55 kph/18.25m
Final round	Men 58 kph/16m	Women 55 kph/16m

4.9. Jump speeds and ramp heights

Women	Maximum speed 54 kph	Ramp 1.50m or 1.65m.
Men	Maximum speed 57 kph	Ramp 1.50m, 1.65m or 1.80m.

4.10. Ramp height change

- Women jumpers will have the option of choosing either a height of 1.50m or 1.65 m (see IWWF Rule [13.02d](#)). To be eligible to jump at 1.65m the skier must have achieved a score of 38m at the 1.50m height in a homologated tournament as certified by their Federation.
- Men jumpers will have the option of choosing either a height of 1.50m, 1.65m or 1.80m (see IWWF Rule [13.02d](#)).
To be eligible to jump at 1.65m the skier must have achieved a score of 38m at the 1.50m height in an homologated tournament as certified by their Federation.
To be eligible to jump at 1.80m the skier must have achieved a score of 48m at the 1.65/1.50m height in an homologated tournament as certified by their Federation.
Skiers who have already achieved the required distances in this rule have no need to provide certified results providing their results are showing in the Ranking List for their age category.

4.11. Overall and Team Competition

IWWF rule 5 applies

For the formulas, please refer to appendix "A"

4.12. Officials

The Bureau of Europe & Africa will appoint the following Officials after receiving proposals from the TC:

A Chief Judge, an Assistant Chief Judge, 6 Judges, a Homologator, a Scorer and 2 Driver.

The organisers shall appoint a Technical Officer and notify Europe & Africa TC of the person so appointed.

NOTE: See Additional Rule 1 for other technical rules.

5. Europe & Africa 35+ Championships

5.1. General

The Europe & Africa Championships shall be held annually.

5.2. Eligibility

Skiers eligible for this competition are Men and Women in the age categories listed in “a”, “b”, “c” and “d” below. All ages refer to the age of the skier on the 31st December of the previous year.

- 35+ 35 – 44 years
- 45+ 45 – 54 years
- 55+ 55 – 64 years
- 65+ 65 years or more

5.3. Teams

Each Federation may enter a Team composed of a maximum of 10 skiers from the 35+, 45+, 55+ and 65+ categories, with a maximum of 4 skiers in any age category.

A maximum of 7 skiers of the same sex can be in a team and a maximum of 3 team skiers of the same sex can be in any age category.

5.4. Events

There shall be 3 events: Slalom, Tricks and Jumping in each age / sex category.

Individual Overall scoring is from either round.

5.5. Minima for entry

a) Team Skiers

	Slalom	Tricks	Jump
35+ Men	6 @ 55kph/18.25m	2500	29m
35+ Women	6 @ 52kph/18.25m	2000	22m
45 + Men	6 @ 52kph/18.25m	2000	26m
45+ Women	6 @ 49kph/18.25m	1500	20m
55+ Men	6 @ 46kph/18.25m	1000	20m
55+ Women	6 @ 43kph/18.25m	800	15m
65+ Men	6 @ 43kph/18.25m	800	12m
65+ Women	6 @ 40kph/18.25m	600	10m

These minima must have been achieved in each event in which the skier is entered. Category 35+ and 45+ skiers who are qualified in two events may be entered in the third event if they have achieved the minimum of Category 45+ or 55+ respectively. Category 55+ and 65+ skiers who are qualified in two events may be entered in the third event.

Federations not having skiers (or only one or two) who have achieved any of these minima shall, nevertheless, have the right to enter one skier, Man or Woman in each age category. This means a maximum of 4 skiers, 1 in each age category. These skiers may be entered in one, two or all three events.

NOTE: The Federation organising the Championships shall be entitled to a team of 10 ten competitors (which must conform to Rule 5.3), whether qualified or not. They may compete in one, two or all three events.

b) Individuals

ELIGIBLE Skiers placed in the top X skiers (as shown below) in the current year’s Europe & Africa Ranking List may be entered as individuals by their Federation:

	Slalom	Tricks	Jump	Overall
	35+, 45+, 55+, 65+	35+, 45+, 55+, 65+	35+, 45+, 55+, 65+	35+, 45+, 55+, 65+
Men	15	15	15	15
Women	15	15	15	15

A skier qualified per the above table, may be declared as a Team member, in the event in which he is qualified, regardless of his qualification score.

Individual skiers who are qualified in two events may be entered in the third event.

c. **Score conversion**

When a skier changes his age category or has obtained scores only in a different age category, the following conversions will apply:

Slalom: A score at 58, 55 or 52 is equal to a score at 55, 52 or 49. (4.00@58/11.25 equal to 4.00@55/11.25).

Jump: A Jump score will be accepted as it is regardless of speed/ramp height.

Tricks: The score will be accepted as it is.

The scores obtained will be used to rank the skier in the age category he has entered. If the converted results give him the possibility to enter in a Championship as an Individual, he can do so, in addition to the number of individual entrants specified in 5.5b.

5.5a. **Wild card**

Each Federation shall be entitled to enter 5 competitors, male or female, as wild card skiers, whether qualified or not. They may compete in one, two or all three events. They are not members of the team and their scores will not be considered for the team score.

5.6. **Entry forms and documentation**

- As evidence of the qualification of skiers Federations must enter the full details on the Entry Forms, including the date and place of the competition(s) in which the required minima were achieved.
- Skiers' proof of nationality must be presented to the Chief Judge or to the Scorer for checking, by 12 noon on the day before the competition starts.
- Federations are held responsible for the accuracy of the information on the entry forms, which must be sent within the stipulated time to both the Europe & Africa Office and the Organisers.
- The checking of skiers' eligibility and qualifications will be done under the responsibility of the Chief Judge before the draw takes place.

5.7. **Proof of qualifications**

The previous year's Ranking list score of each skier will be used for seeding purposes unless by 12 noon on the day before competition starts proof of a higher performance in writing is received. Proof must be in the form of a copy of the signed results and can be sent by mail, fax or via the Team Manager. If Federations knowingly submit a wrong higher score sanctions will be applied.

The Europe & Africa TC will produce an alphabetic skier scoring list throughout the season. This list may be consulted to provide proof of qualification if no other proof is available. However, it is noted that the responsibility for proof of qualification is with each Federation and NOT with the Europe & Africa TC, the Chief Judge or the Scorer.

5.8. **Slalom starting speeds**

35+ Men	55 kph shorten at 55 kph
35+ Women	52 kph shorten at 55 kph
45+ Men	52 kph shorten at 55 kph
45+ Women	49 kph shorten at 55 kph
55+ Men	46 kph shorten at 55 kph
55+ Women	43 kph shorten at 52 kph
65+ Men	43 kph shorten at 52 kph
65+ Women	40 kph shorten at 49 kph

The final round start speeds will be decided by the Appointed Judges.

5.9. Jump speeds and ramp heights

35+ Men	Maximum speed 57 kph	Ramp 1.50m or 1.65m
35+ Women	Maximum speed 51 kph	Ramp 1.50m
45+ Men	Maximum speed 54 kph	Ramp 1.50m
45+ Women	Maximum speed 51 kph	Ramp 1.50m
55+ Men	Maximum speed 51 kph	Ramp 1.50m
55+ Women	Maximum speed 51 kph	Ramp 1.50m
65+ Men	Maximum speed 51 kph	Ramp 1.50m
65+ Women	Maximum speed 48 kph	Ramp 1.50m

Men 35+ shall use the 1.50m ramp unless they can show a certified result of a jump of 38m on a 1.50m ramp in which case they may opt to jump on a 1.65m. ramp.

Skiers who have already achieved the required distances in this rule have no need to provide certified results providing their results are showing in the Ranking List.

5.10. Overall and Team Competition

IWWF rule 5 for Over 35 Championships applies

For the formulas, please refer to appendix "A"

5.11. Officials

The Bureau of Europe & Africa will appoint the following Officials after receiving proposals from the TC:

A Chief Judge, an Assistant Chief Judge, 6 Judges, a Homologator, a Scorer, an Assistant Scorer and **2 Drivers.**

The organisers shall appoint a Technical Officer and notify Europe & Africa TC of the person so appointed.

5.12. Who may Protest and How it is done (replaces IWWF Rules 9.01)

Protests can be made only by a skier's team manager or by the skier themselves if they are an individual skier. Protests are presented to the Chief Judge and will be considered by the Appointed Judges. All Protests must be made in writing stating the reason(s) for the protest and quoting the relevant rule number(s). They must be presented as soon as possible, but no later than 30 minutes after the results of the event are announced and the Judges scoring forms are available for inspection.

NOTE: See Additional Rule 1 for other technical rules.

6. Mediterranean Games

6.1. Participation

Only countries accepted by the Mediterranean Games International Committee which are of IWWF (including Associated Federations) may enter teams into this competition.

Competition will be held in Tournament Slalom.

6.2. Team Composition

Each country may enter a team comprising a maximum of 4 male and 4 female athletes.

6.3. Preliminary Round

2 Preliminary Rounds will be held in each discipline.

The Preliminary Rounds will be split into series.

Series 1 will be the top ranked skiers

Series 2 will be the lower ranked skiers

Classification in the Preliminary Rounds will be based on the best result from either round.

6.4. Finals

If there are less than 8 skiers in the Preliminary Round:

All skiers are qualified to the Final round.

If there are less than 20 skiers in the Preliminary Round:

The maximum number of skiers in the Finals will be 8,

The top placed 4 skiers from the Preliminary Round of Series 1 will go through to the final.

The top placed 4 skiers from the Preliminary Round of Series 2 will go through to the final.

If there are more than 20 skiers in the Preliminary Round:

The maximum number of skiers in the Finals will be 10,

The top placed 5 skiers from the Preliminary Round of Series 1 will go through to the final.

The top placed 5 skiers from the Preliminary Round of Series 2 will go through to the final.

The starting order of the Finals is the reverse order of the preliminary round results (series 1 and 2 together).

6.5. Start Order Final Round

The order of the skiers qualified for the final round in any event shall be the reverse of their score in the preliminary round of that event.

The order of contestants tied in placement shall be settled by random draw.

6.6. Ties

Resolving Ties in the Preliminary round

In the case of a tie for any position which may result in more than 4 (less than 20 skiers) or 5 (20 skiers or more) skiers for each series going through to the final round there will be a runoff between the tied skiers so that only 4 or 5 skiers for each series go into the finals. The run off shall have a new drawing for order.

For slalom, the tie breaking run shall begin with the scheduled speed and rope length of the last complete pass and conclude with the first miss.

If a Tie still exists, the placement of the tied skiers shall be in the order that they skied (i.e. first skier to get the score has the highest place among those tied, the second skier to get the score has the 2nd highest place among those tied and so on.)

Resolving Ties in the Final round

If a tie exists for first place, it shall be run off. If a tie exists for 2nd or 3rd place, placement shall be decided based on the higher preliminary round score. If a tie still exists, it shall be run off. The run off shall have a new drawing for order.

For slalom, the tie breaking run shall begin with the scheduled speed and rope length of the last complete pass and conclude with the first miss.

If a Tie still exists, the placement of the tied skiers shall be in the order that they skied (i.e. first skier to get the score has the highest place among those tied, the second skier to get the score has the 2nd highest place among those tied and so on.)

6.7. Slalom Start Speed

In slalom the start speed for the Preliminary and Final rounds will be free from 46 kph.

6.8. Officials

For the Tournament Competition, the Europe & Africa TC will appoint the panel for a RL homologation event consisting of Chief Judge, 5 Judges, Homologator, Scorer, 2 Drivers and one Technical Officer.

6.9. Special conditions

Under the authority of the Tournament Council Chairman, proposed rules may be tested. The Chairman shall determine the appropriate homologation level under the test conditions. A complete report of the results of the test will be made by the Homologator and Chief Judge and sent to the Chairman for distribution to the Tournament Council.

6a. Mediterranean Beach Games

6A.1. Participation

Only countries accepted by the Mediterranean Games International Committee which are of IWWF (including Associated Federations) may enter teams into this competition.

The competition will include the disciplines of Tournament Slalom and Tricks + Wakeboard boat. There will be the following categories in each discipline: Open Men and Open Women.

6A.2. Team Composition

A team is composed of athletes, who are slalom skiers, trick skiers or wake boarders.

Each country is allowed to entry a maximum of 8 competitors, with a maximum of 6 in each sex and a maximum of 6 in each event.

6A.3. Preliminary Round

For each discipline, the preliminary round consists of 2 separate qualification rounds.

All competitors will be split into two series.

The series are defined by the performances as listed on the last E&A male & female rankings list.

All competitors from the same Country will compete in the same series.

Series 1 will be the top ranked countries based on the ranking of their best entered skiers or riders

Series 2 will be the low ranked countries based on the ranking of their best entered skiers or riders

The starting order for the 1st qualification round for each series will be a random draw.

The starting order for the 2nd qualification round will be the reverse order of the classification of the 1st qualification round.

For each series and each discipline, the preliminary round results will be based on the best performance achieved in either round.

6A.4. Finals

There will be finals in each category of each discipline: Open Men and Open Women.

If there are less than 8 skiers/riders in the Preliminary Round:

All skiers/riders are qualified to the Final round.

If there are less than 20 skiers/riders in the Preliminary Round

The maximum number of skiers/riders in the Finals will be 8,

The top placed 4 skiers/riders from the Preliminary Round of Series 1 will go through to the final.

The top placed 4 skiers/riders from the Preliminary Round of Series 2 will go through to the final.

With the further limitation that a maximum of 2 athletes for each Federation may be admitted in each final.

If there are more than 20 skiers/riders in the Preliminary Round

The maximum number of skiers/riders in the Finals will be 10,

The top placed 5 skiers/riders from the Preliminary Round of Series 1 will go through to the final.

The top placed 5 skiers/riders from the Preliminary Round of Series 2 will go through to the final.

With the further limitation that a maximum of 2 athletes for each Federation may be admitted in each final.

6A.5. Start Order Final Round

The skiing order of the skiers qualified for the final round in any event shall be the reverse of their score in the preliminary round of that event.

The order of contestants tied in placement shall be settled by random draw.

6A.6. Ties

Resolving Ties in the Preliminary round

In the case of a tie for any position which may result in more than 4 (less than 20 skiers) or 5 (20 skiers or more) skiers for each series going through to the final round there will be a runoff between the tied skiers so that only 4 or 5 skiers for each series go into the finals. The run off shall have a new drawing for order.

For slalom, the tie breaking run shall begin with the scheduled speed and rope length of the last complete pass and conclude with the first miss.

For tricks, each tying contestant shall be allowed one pass through the trick course.

If a Tie still exists, the placement of the tied skiers shall be in the order that they skied (i.e. first skier to get the score has the highest place among those tied, the second skier to get the score has the 2nd highest place among those tied and so on.)

Resolving Ties in the Final round

If a tie exists for first place, it shall be run off. If a tie exists for 2nd or 3rd place, placement shall be decided based on the higher preliminary round score. If a tie still exists, it shall be run off. The run off shall have a new drawing for order.

For slalom, the tie breaking run shall begin with the scheduled speed and rope length of the last complete pass and conclude with the first miss.

For tricks, each tying contestant shall be allowed one pass through the trick course.

If a Tie still exists, the placement of the tied skiers shall be in the order that they skied (i.e. first skier to get the score has the highest place among those tied, the second skier to get the score has the 2nd highest place among those tied and so on.)

6A.7. Officials

For the Tricks competition, the Europe & Africa TC will appoint the panel for a RL homologation event consisting of Chief Judge, 5 Judges, Homologator, Scorer, 2 Drivers and one Technical Officer. For the Wakeboard competition, the Europe & Africa Wakeboard Boat Council will appoint the panel.

6A.8. Special conditions

Under the authority of the Tournament/Wakeboard Boat Council Chairman, proposed rules may be tested. The Chairman shall determine the appropriate homologation level under the test conditions. A complete report of the results of the test will be made by the Homologator and Chief Judge and sent to the Chairman for distribution to the relevant Council.

7. Registration of Homologated Competitions

All homologated competitions must be registered in advance on the E&A Calendar per the time frames shown below. Registration is via the <http://iwwfeatc.com/> website.

Competitions may only be registered by Federations. The password will be provided by the E&A office.

7.1. Competition and site Codes

All competitions registered in the Europe & Africa Confederation will receive a competition code and a site code allocated by the TC.

A list of codes will be published on the website and Officials can access this list easily to find the codes for their competitions.

Failure to acquire a code for any competition will mean that competition will NOT be homologated.

7.2. Definition of types of competition

7.2.a. Titled Events

Titled events are those major events for which the IWWF or the E&A Confederation issue a Letter of Agreement and Obligations. These include all World and Europe & Africa Championships. The host Federation does not need to register these events on the Calendar as they are already placed there by the Council.

- a. The TC has the right to send an appointed person to inspect the proposed site of any titled International Competition. In this case the Organisers shall pay the costs involved.
- b. The Organisers must comply with the provisions of any relevant Byelaw or List of Obligations. Should the Organisers wish to vary any of the provisions the agreement of the Administrative Committee must be obtained at the time of application for inclusion of the competition on the Calendar.
- c. Homologation can be Ranking List or Record Capability – see Additional Rule 20

7.2.b. International Competition

- a. A competition open to skiers of more than one Federation
- b. No skier may enter an International Competition against the wishes of his Federation. It is the responsibility of his Federation to notify the organisers if a skier is NOT allowed to compete.
- c. The events at International Competitions may be homologated to Normal, Ranking List or Record Capability level. (see Add Rules 19 and 20) If it is the intention to seek Record Capability homologation, this must be notified at the time of entry on the Calendar and the competition will then be marked "RC" and the TC may send an observer to the competition at the cost of the organising Federation.
- d. If any rules of the competition vary significantly from the relevant IWWF Technical Rules or the Additional Rules details must be given at the time of application for entry on the Calendar and the TC may refuse the application if it does not approve the variation(s). (see Additional Rule 1.1.b.)
- e. The Organisers shall be responsible for the cost of full board and lodging of the Appointed Officials and their transport between hotel and site. Board and lodging means from the night before an official's duties begin to and including the night of the last competition day. Any further hospitality offered by the Organisers shall apply equally to all the Appointed Officials.
- f. The organiser shall provide:
 1. A Chief Organiser.
 2. A Technical Officer.
 3. A qualified Safety Director and rescue, first aid and medical services to comply with IWWF Rule 7.
 4. A Press Officer and adequate facilities for journalists and TV personnel if applicable.
 5. Personnel to fill ancillary positions such as secretaries, start marshals, video operators, timers, etc. A list of names must be handed to the Chief Judge who is responsible for the selection and allocation of ancillary positions.

6. All courses, installations and equipment required by the Rules and needed for the efficient running of the competition, including video equipment, radios and other communication and timing equipment. These must be ready for checking prior to the arrival of the Homologator.
7. Adequate facilities for ski storage and catering. Private working areas for the jury and Scorers not accessible to anyone other than on official business. Rooms for other meetings.
8. Adequate transport between accommodation and site.
9. Copies of results shall be made available via the E&A results site at <http://www.iwwfed-ea.org/>. If a printed copy of signed results is needed, the Team Captain need to make the request, directly to the Scorer, well in advance.

This rule is not intended as a complete checklist but as an indication of the minimum requirements for an International Calendar Competition.

7.2.c. National Competition

- a. A competition open only to skiers who are eligible to ski for the host country, as defined in Rule 4.02 of the IWWF rules (In case of doubt as to the nationality of a competitor, the Judges normally will refer to his passport. If a skier does not have a passport from the country for which he is skiing, he must prove residence in the country for at least five years and membership in an affiliated club of the Federation.
- b. If the Organisers of a competition announced as a National Competition accept an entry from a skier not entitled to enter under this rule his Federation must be shown on the results and the homologation level for any foreign skiers is limited to Normal.
- c. The organising Federation may specify any further requirements for entry or restrictions on entry that it wishes.
- d. The events at a National Competition may be homologated at Normal, Ranking List or Record Capability level (see Additional Rules 19 & 20). If it is the intention to seek Record Capability homologation this must be notified to the TC at least 1 month in advance listing the proposed Officials and the TC may decide to send an observer at the cost of the organising Federation.
- e. The organising Federation is solely responsible for the rules of the competition and for the effect of any variations from the IWWF Technical Rules or the Additional Rules (see Rule 1.1.b.).
- f. The organising Federation is solely responsible for the appointment of officials and the extent of reimbursement, if any, of their travelling and board and lodging expenses.

7.3. Time Frame for Registration

The following types of competition should be registered prior to the 6th November for the following season:

- a. Titled Events
- b. Cash Prize Competitions open to skiers of more than one Federation where cash or goods to the value of a total exceeding 2,500 € or its equivalent in other currency are offered as prizes. These will be marked "CP" on the Calendar.
- c. International Record Capability Competitions.
- d. International Ranking List competitions.
- e. Competitions open to skiers of more than one Federation and containing in their title the words "Championships(s)", "Criterium", "Masters", "Classic" or other words deemed by the TC to imply a high-level competition, regardless of the homologation level.

Competitions registered before November 6th will take priority for the date registered and the TC will normally not allow another competition of the same type on the same date.

NOTE: The intention of this rule is to make sure that the Calendar includes all competitions where the expected standard of the skiers will produce results which affect the top places in the Europe & Africa or World Rankings Lists.

The following types of competition must be registered at least two weeks in advance of the competition date:

- a. National events with Normal, RL homologation
- b. International Normal homologation events

7.4. Late Registration and changes

There is no charge made for registration of competitions up to the date of the time frame listed in rule 7.3 or listed below.

International Competitions cannot normally be added to the calendar after May 31st. However, Federations may apply to the Europe & Africa TC for special permission to add an International competition up to 30 days before the proposed start date of the competition. The Europe & Africa TC will decide if the competition is allowed to be added to the calendar. In the case of Cash Prize or Record Capability Homologation, the organiser must submit the names of their proposed jury panel at the time of the application.

If a competition is added/amended to the Calendar after the Europe & Africa Congress or after the deadline, the following fines will be levied:

- | | |
|---|-------|
| a) Fine for adding a competition | 150 € |
| b) Fine for adding a CP1 event after Congress | 400 € |
| c) Fine for changing dates or place of a competition after March 1st | 100 € |
| d) Fine for cancelling an International competition after March 1st | 200 € |
| e) Fine for changing a National Competition to an International Competition | 150 € |
| f) Fine for changing Homologation Level | 150 € |
| g) Fine for not uploading or not uploading correctly a competition file | 100 € |

7.5. Homologation fees

Homologation fees are payable on the submission of an homologation dossier, even if the homologation or the homologation level is refused.

The fee for a normal homologation is 120 Euro

The fee for a rankings list or record capability homologation 220 Euro

One National Championships, or an equivalent name, are exempted from such a fee. When these are run in several parts only one will be exempted.

7.6. Appointment of officials

For all Titled events, Cash Prize Events and International Record Capability Competitions.

- a. 2 Officials from other country(ies) will be appointed to all RC competitions.
- b. The E&A TC will select the Officials (Judges, Homologators, Scorers and Drivers).
- c. The organisers shall appoint a Technical Officer and notify Europe & Africa TC of the person so appointed.

The number and qualification of Officials of each category for each competition will be decided by the TC. The organising Federation may inform the TC of the names of the Officials they would prefer to be appointed but this is not binding on the TC. Should the TC be unable to appoint all the necessary Officials the organising Federation shall be responsible for appointing Officials to fill the vacancies and for any expenses that this may involve.

- d. In the case of Cash Prize competitions, as defined above, the Organisers shall pay the travelling expenses of all Appointed Officials. See Europe & Africa Byelaws
- e. In cases where the Organisers are not liable to pay the travel expenses of the Appointed Officials they shall ensure officials are given at least 2 months in advance, notice of the schedule so the officials can purchase the cheapest possible travel. See Byelaws.

For all other events the host Federation will be responsible for appointing the Officials according to the rules contained in the IWWF Technical Rules and in this Additional Rules for the level of Homologation.

8. Officials Qualifications

The IWWF Europe & Africa Confederation sets and runs examinations for the following International qualifications for Officials

Judge	Homologator	Scorer	Driver
Level 1 (J1)	Level 1 (H1)	Level 1 (S1)	Level 1 (D1)
Level 2 (J2)	Level 2 (H2)	Level 2 (S2)	Level 2 (D2)
Level 2* (J2*)			Level 2* (D2*)

Level 2* (J2*) qualify only in Slalom and Jump

Level 2* (D2*) qualify only in Slalom and Tricks

The natural progression for officials is to upgrade from Level 3 (national levels) to Level 2 and then to Level 1. Level 1 officials are subject to periodic re-evaluation in order to keep their qualification. The re-evaluation may be an exam or a peer review. If a Level 1 official does not succeed in keeping their Level 1 grade, they automatically become Level 2.

At the start of this new system, all previous International Calculators, International Drivers and E&A Homologators became Level 1.

The following rules apply to all International Officials.

8.1. Responsibility

Europe & Africa International Officials are solely responsible to and the responsibility of the TC.

If required by their own Federation, International Officials must be members of their National Federation.

8.2. Duties

- To carry out his duties and comply with all relevant rules with complete impartiality.
- To make himself available to function at least twice at Europe & Africa Calendar Competitions including at least once outside his country of residence each season.
- To function each season to the satisfaction of the TC.
- To accept any duties, he may be given by the Chief Judge at a competition that he is attending as a spectator unless there are valid reasons against this.

8.3. Rights

An International Official is entitled to such rights and reimbursement of expenses as are specified in the Bye-Laws, Obligations and Additional Rules.

8.4. Cards

Cards will be issued and renewed at the discretion of the TC and subject to any specific requirements shown under the detailed information for each Official Category. The TC will also take into consideration the provisions of the Byelaws and Additional Rules. Should the TC decide not to renew an International Officials card it will also decide whether or not to issue a card for a lower grade.

8.5. Appointment to panels

After passing their exam International Officials are entitled to be nominated for certain standards of competition according to their qualification. The relevant standards are shown under the detailed information for each Official category.

Each year International Officials receive a calendar list inviting them to apply to officiate. This list must be completed and returned in the time specified. The official shall also inform the TC if he is normally unable to ride in the towboat. The TC will then prepare a list of appointments to panels and distribute this to the Officials and the competition Organisers.

Once having been appointed to an official panel an International Official is expected to attend, except by reason of force majeure, in which case he must advise the organisers and the President of the TC in writing as soon as possible.

8.6. Examinations

- a. Each year the TC publishes the dates and places where examinations will take place. These will be at the Officials Seminar, Tournament Council meetings and some international competitions.
- b. Federations wishing to organise an exam venue in their home country may apply to the Tournament Council. This will require a minimum of 2 candidates and all costs of the travel and accommodation of the examiner are to be paid by the host Federation. This is of course subject to a E&A TC member or other suitable person being available. Such exams will need early booking by the Federations.
- c. Application for the examination of a new international candidate shall be made on the official form to the TC by the candidate's Federation. No exam will take place unless a form is completed and submitted in advance.
- d. Application for the upgrade examination of an existing International candidate shall be made on the official form. It is not necessary to be signed by the Federation.
- e. The candidate must be able to understand and make himself understood in English.
- f. Required age and prior experience requirements are shown under the detailed information for each Official category.
- g. The format of each examination is shown under the detailed information for each Official Category.
- h. Exam papers will be written in English.
- i. The TC will, after approval of the application advise the candidate of the date and place of his examination and the name of the examiner who will be a member of the TC or a suitable person appointed by the TC.

8.7. Results of examination

- a. Immediately after the examination, the examiner shall send the TC a copy of the exam papers and any other relevant papers.
- b. The TC will notify the candidate of his exam results as soon as possible, and the appointment will become official as soon as it is approved by the TC. If requested by the candidate as much information as possible regarding the reasons for a failure will be given.
- c. A candidate who fails any part of the examination may re-take it in the same season.

9. World, E&A Titled Events – Officials Qualifications

9.1. Limitations on appointment to titled events

It is the INTENTION of the Tournament Council that only officials qualified to the following standards will be appointed to the major World and Europe & Africa Titled Events.

However, it should be noted that at the discretion of the Europe & Africa TC, Level 2 Judges may be also appointed.

Event	Preferred Qualification
The World Championships	Level 1 Judge Level 1 Homologator Level 1 Scorer Level 1 Driver
The World Over 35 Championships	Level 1 Judge Level 1 Homologator Level 1 Scorer Level 1 Driver
The World Under 21 Championships	Level 1 Judge Level 1 Homologator Level 1 Scorer Level 1 Driver
The World Junior Championships	Level 1 Judge Level 1 Homologator Level 1 Scorer Level 1 Driver
The Europe & Africa Open Championships	Level 1 Judge Level 1 Homologator Level 1 Scorer Level 1 Driver
The Europe & Africa Under 21 Championships	Level 1 Judge Level 1 Homologator Level 1 Scorer Level 1 Driver
The Europe & Africa Youth Championships	Level 1 Judge Level 1 Homologator Level 1 Scorer Level 1 Driver
The Europe & Africa Over 35 Championships	Level 1 Judge Level 1 Homologator Level 1 Scorer Level 1 Driver

10. Level 1 Judges (J1)

10.1. Prior qualification and age

A Level 1 Judge must already be qualified as a Level 2 Judge in all 3 Tournament Events (Slalom, Tricks and Jump) for a minimum of 2 seasons.

A Level 1 Judge must be at least 21 years of age at the time of taking his exam.

10.2. Function

A Level 1 Judge is qualified in all three events of Tournament Water skiing.

A Level 1 Judge is qualified to function at any level of homologated competition.

A Level 1 Judge is qualified to be nominated for Europe & Africa and World Championships at any level.

10.3. Theoretical examination

- a. The examination tests that the candidate can master the application and interpretation of the rules to the level necessary to judge at Europe & Africa and World Championships.
- b. The questions are written in English. No translation into any other language is provided.
- c. The candidate may answer the questions in his own language if he wishes. The cost, if any, of translating the answers into English shall be paid by the candidate's Federation. A candidate who does not answer the questions in English must prove to the satisfaction of the examiner that he is capable of discussion in this language.
- d. The pass mark is 80%.
- e. The candidate is allowed to refer to the IWWF Technical Rules and the Europe & Africa Additional Rules.

10.4. Practical examination

The examination is in two parts:

a. A test of advanced trick reading and judging.

The trick level will be high, with a special video compiled by the Europe & Africa TC and will include for tricks passes of over 5.000 points, runs of over 10.000 points as well as extracts and particular sequences deemed necessary.

Each of the following will be counted as 1 error:

1. omitting to write a trick performed by a skier
2. writing a trick that was not performed by the skier
3. writing a trick other than the trick the skier performed
4. omitting to indicate the skier started in back position
5. failure to no credit improperly performed tricks
6. failing to write "repetition" beside a repeated trick
7. not crediting a tricks correctly performed

Points will be awarded to each pass for reading and for judging the runs.

The pass mark is 80% each for writing the runs and judging the runs.

b. A test of slalom judging – including gate calls and buoy score.

1. Points will be awarded to each pass / gate being judged correctly.
2. The pass mark is 80%.

10.5. Exam dates

The TC will publish annually a list of exam venues.

10.6. Level 1 Judge re-qualification

To maintain their status, Level 1 Judges will need to attend at least every 3 years at the Official Seminar (e.g. seminar attendance in 2010, next seminar attendance in 2013), and to take a test at least every 3 years (e.g. exam in 2010, next test in 2013). This will be a practical test, which may also include theoretical questions as needed.

11. Level 2 Judges (J2 – J2*)

11.1. Prior qualification and age

Level 2 Judges must already be qualified as Level 3 Judges in either Slalom & Jump or all 3 Events (Slalom, Tricks & Jump)

And have judged at least 2 times at homologated competitions and as an assistant official at least 2 times at international homologated competitions

EXCEPT that qualified Skiers under Rule 12 may be fast tracked through the special programme detailed in these rules. Level 2 Judges must be at least 18 years old at the time of their exam.

11.2. Function

A Level 2 Judge may function at any level of homologated competition in the events for which he is qualified see rule 9.

11.3. Theoretical examination

- a. The examination tests that the candidate can master the application and interpretation of the rules to the level necessary to judge at R homologation competitions.
- b. The questions are written in English. No translation into any other language is provided.
- c. The candidate may answer the questions in his own language if he wishes. The cost, if any, of translating the answers into English shall be paid by the candidate's Federation. A candidate who does not answer the questions in English must prove to the satisfaction of the examiner that he is capable of discussion in this language.
- d. The pass mark is 80%.
- e. The candidate is not allowed to refer to any rulebooks or notes.

11.4. Practical examination

The examination is in two parts:

a. A test of advanced trick reading and judging.

The candidate is required to write the trick runs of specified skiers from a video file. The examiner will submit to the TC the trick sheets written by the candidate.

Each of the following will be counted as 1 error:

1. omitting to write a trick performed by a skier
2. writing a trick that was not performed by the skier
3. writing a trick other than the trick the skier performed
4. omitting to indicate the skier started in back position
5. failure to no credit improperly performed tricks
6. failing to write “repetition” beside a repeated trick
7. not crediting a tricks correctly performed

Only 20-second passes for which the score, before disallowed tricks, is 3500 points or more will be considered.

Points will be awarded to each pass for reading and for judging the runs.

The pass mark is 80%.

b. A test of slalom judging – including gate calls and buoy score.

1. Points will be awarded to each pass / gate being judged correctly.
2. The pass mark is 80%.

11.5. Exam dates and venues

The TC will publish annually a list of exam venues.

11.6. Renewal of qualification

All Level 2 Judges will be required to attend at one seminar within the previous 3 years (e.g. Seminar 2010 followed by Seminar 2013) in order to ensure they are up to date with the current rules. At the conclusion of the Seminar a short written exam may be held to cover the latest rule issues.

By special request National Federations may take on the responsibility of ensuring their Level 2 Judges are trained and evaluated at a National Seminar under the supervision of a designated official approved by the TC.

12. Skier fast track Option

Skiers who meet the following skiing standards can take the Level 2 Judge exam (either Slalom & Jump OR 3 event according to their standard) without first being a Level 3 Judge.

A Europe & Africa skier who has passed their Level 2 Judge exam in any other Confederation may apply to the Europe & Africa TC to be added to the list of Level 2 Judges in Confederation Europe & Africa.

12.1. Skier standards

A skier qualified in Slalom or Jump will be allowed to take the Level 2 Judge exam for Slalom and Jump.

Only skiers qualified in Slalom or Jump and also qualified in Tricks are allowed to take the Level 2 Judge 3 event exam.

Minimum required skier's personal results:

Sex	Slalom	Tricks	Jump
Male	6 @ 58kph/11.25m	6000 points	55m
Female	6 @ 55kph/12m	6000 points	40m

If skiing in a competition, a skier judge cannot judge his own category.

12.2. Exam dates

The TC will publish annually a list of exam venues.

12.3. Seminar Attendance

Attendance at the E&A Officials Seminar is NOT mandatory for this category provided the skier is still achieving the standards shown above in competition during the previous year. Skiers who have retired from competition or have lower scores are required to attend the Seminar as shown in Rule 17.

12.4. Level 1 Judge (skiers)

After attaining the Level 1 Judges qualification, attendance at the E&A Officials Seminar and re-examination is NOT mandatory, provided the skier is still achieving the standards shown above in competition during the previous year. Skiers who have retired from competition or have lower scores are required to attend the Seminar as shown in Rule 17.

13. Level 1 Homologator (H1)

13.1. Prior qualification and age

The candidate must have been a Level 2 Homologator for at least 1 year and have functioned as the Homologator at least 2 times at 3 event homologated competitions.

Level 1 Homologators must be at least 18 years old at the time of the exam.

13.2. Function

A Level 1 Homologator is qualified to function at any level of homologated competition.

13.3. Theoretical examination

- a. The examination tests the candidate's knowledge of the rules and the duties of a Homologator to the level required to homologate at Record Capability homologation competitions.
- b. The questions are written in English. No translation into any other language is provided.
- c. The candidate may answer the questions in his own language if he wishes. The cost, if any, of translating the answers into English shall be paid by the candidate's Federation. A candidate who does not answer the questions in English must prove to the satisfaction of the examiner that he is capable of discussion in this language.
- d. The candidate will also be required to describe in detail how a Homologator homologates a record in any event.
- e. The pass mark is 80%.

13.4. Practical examination

The candidate is required to check the slalom and jump courses by theodolite and calculation. He is also required to set up and check the jump meter system using a method officially recognized by the TC.

Further he must submit 2 homologation dossiers to the TC before he takes the exam.

The Chief Judge and the Homologator of the competition will receive a questionnaire issued by the Europe & Africa TC, concerning the Homologator ability, general attitude, knowledge of homologation software, willingness of work etc. which must be completed and sent to the Europe & Africa TC.

13.5. Exam Dates

The TC will publish annually a list of exam venues.

13.6. Renewal of qualification

To maintain their status, Level 1 Homologators will need to attend at least every 3 years at the Official Seminar (e.g. seminar attendance in 2010, next seminar attendance in 2013), and will be reevaluated either by test or peer review every 3 years (e.g. exam in 2010, next test in 2013).

14. Level 2 Homologator (H2)

14.1. Prior qualification and age

The candidate must have been a Level 3 Homologator for at least 1 year and have functioned as assistant Homologator at least 2 times at 3 event homologated competitions.

Level 2 Homologator must be at least 18 years of age at the time of the exam.

14.2. Function

Level 2 Homologators are qualified to function at ranking list homologated events only in their home country.

A Level 2 Homologator cannot function at any E&A or World Titled, CP1, CP2 event.

RC Slalom and Jump events are also excluded. However, commencing 2017, a Level 2 Homologator is permitted to function at Record Capability Trick events.

14.3. Theoretical examination

a. The examination tests the candidate's knowledge of the rules and the duties of a Homologator to the level required to homologate at competitions.

b. The pass mark is 80%.

The test (questionnaire) issued by the TC must be taken under the supervision of an Level 1 Homologator or a TC appointed person.

14.4. Practical examination

The candidate is required to check the slalom and jump courses by theodolite and calculation. They are also required to set up and check the jump meter system using a method officially recognized by the TC.

14.5. Exam Report

The Homologator of the competition will receive a questionnaire issued by the Europe & Africa TC, concerning the ability, general attitude, willingness of work etc. which must be completed and sent to the Europe & Africa TC along with the theoretical examination paper.

14.6. Renewal of qualification

All Level 2 Homologator will be required to attend at one seminar within the previous 3 years (e.g. Seminar 2010 followed by Seminar 2013) in order to ensure they are up to date with the current rules.

A peer review may be required.

By special request National Federations may take on the responsibility of ensuring their Level 2 Homologator are trained and evaluated at a National Seminar under the supervision of a designated official approved by the TC.

15. Level 1 Scorer (S1)

15.1. Prior qualification and age

The candidate must have been a Level 2 Scorer for at least 1 year and have functioned as the Scorers at least 2 times at 3 event homologated competitions.

Level 1 Scorers must be at least 18 years of age at the time of the exam.

15.2. Function

A Level 1 Scorer is qualified to function at any level of homologated competition.

15.3. Theoretical examination

- a. The examination tests the candidate's knowledge of the rules and the duties of a Scorer to the level required to calculate at Record Capability homologation competitions and his ability to memorise the values of commonly performed tricks.
- b. The questions are written in English. No translation into any other language is provided.
- c. The candidate may answer the questions in his own language if he wishes. The cost, if any, of translating the answers into English shall be paid by the candidate's Federation. A candidate who does not answer the questions in English must prove to the satisfaction of the examiner that he is capable of discussion in this language.
- d. The pass mark is 80%.
- e. The candidate is not allowed to refer to any rulebooks or notes.

15.4. Practical examination

The candidate is required to function as an assistant Scorer at the competition and to demonstrate his ability to function as the Scorer of a competition both manually and by use of a computer.

The Chief Judge and the Scorer of the competition will receive a questionnaire issued by the Europe & Africa TC, concerning the Scorer ability, general attitude, knowledge of scoring program, willingness of work etc. which must be completed and sent to the Europe & Africa TC.

15.5. Exam dates

The TC will publish annually a list of exam venues.

15.6. Renewal of qualification

To maintain their status, Level 1 Scorer will need to attend at least every 3 years at the Official Seminar (e.g. seminar attendance in 2010, next seminar attendance in 2013), and will be reevaluated either by test or peer review every 3 years (e.g. exam in 2010, next test in 2013).

16. Level 2 Scorer (S2)

16.1. Prior qualification and age

The candidate must have been a Level 3 Scorer for at least 1 year and have functioned as the Scorers at least 2 times at 3 event homologated competitions.

Level 2 Scorers must be at least 18 years of age at the time of the exam.

16.2. Function

A Level 2 Scorer is qualified to function at any level of homologated competition.

16.3. Theoretical examination

- a. The examination tests the candidate's knowledge of the rules and the duties of a Scorer to the level required to calculate at Ranking List homologation competitions and his ability to memorise the values of commonly performed tricks.
- b. The questions are written in English. No translation into any other language is provided.
- c. The candidate may answer the questions in his own language if he wishes. The cost, if any, of translating the answers into English shall be paid by the candidate's Federation. A candidate who does not answer the questions in English must prove to the satisfaction of the examiner that he is capable of discussion in this language.
- d. The pass mark is 80%.
- e. The candidate is not allowed to refer to any rulebooks or notes.

16.4. Practical examination

The candidate is required to function as an assistant Scorer at the competition and to demonstrate his ability to function as the Scorer of a competition both manually and by use of a computer.

The Chief Judge and the Scorer of the competition will receive a questionnaire issued by the Europe & Africa TC, concerning the Scorer ability, general attitude, knowledge of scoring program, willingness of work etc. which must be completed and sent to the Europe & Africa TC.

16.5. Exam dates

The TC will publish annually a list of exam venues.

16.6. Renewal of qualification

To maintain their status, Level 2 Scorer will need to attend at least every 3 years at the Official Seminar (e.g. seminar attendance in 2010, next seminar attendance in 2013), and will be reevaluated either by test or peer review every 3 years (e.g. exam in 2010, next test in 2013).

By special request National Federations may take on the responsibility of ensuring their Level 2 Scorer are trained and evaluated at a National Seminar under the supervision of a designated official approved by the TC.

17. Level 1 Drivers (D1)

17.1. Prior qualification and age

The candidate must have been a Level 2 Driver for at least 1 year and have functioned as the Driver at least 2 times at 3 event homologated competitions.

Level 1 Drivers must be at least 18 years of age at the time of the exam.

17.2. Function

A Level 1 Driver is qualified to function at any level of homologated competition.

17.3. Theoretical examination

To be taken at a designated exam venue as defined each year by the TC.

- This examination tests the candidate's knowledge of the rules that affect drivers and their duties to the level required to drive at Record Capability competitions. The theoretical examination may be taken at the Officials Seminar.
- The questions are asked and must be answered in English and the candidate must satisfy the examiner that he is capable of discussion in this language.
- The pass mark is 80%.
- The candidate is not allowed to refer to any rulebooks or notes.

17.4. Practical examination

Level 1 Drivers exams cannot be held at Titled or RC competitions.

The candidate is required to drive part of all 3 events during the competition. However, he must drive skiers of the minimum standard as reported below.

The Chief Judge and the Driver of the competition will receive a questionnaire issued by the Europe & Africa TC, concerning the driver's ability, general attitude, knowledge of speed control, willingness of work etc. which must be completed and sent to the Europe & Africa TC.

Minimum results of skiers in the driver exam competition:

	Tricks	Slalom	Jump
Men	4000 points	6@16m & 4@14.25m (58 kph)	43m
Women	3200 points	6@16m & 4@14.25m (55 kph)	31m

17.5. Renewal of qualification

To maintain their status, Level 1 Drivers will need to attend at least every 3 years at the Official Seminar (e.g. seminar attendance in 2010, next seminar attendance in 2013), and will be revaluated either by test or peer review every 3 years (e.g. exam in 2010, next test in 2013).

18. Level 2 Drivers (D2)

18.1. Prior qualification and age

The candidate must have been a Level 3 Driver for at least 1 year and have functioned as the Driver at least 2 times at 3 event homologated competitions.

Level 2 Drivers must be at least 18 years of age at the time of the exam.

18.2. Function

A Level 2 Driver is qualified to function at any level of homologated competition.

18.3. Theoretical examination

To be taken at a designated exam venue as defined each year by the TC.

- This examination tests the candidate's knowledge of the rules that affect drivers and their duties to the level required to drive at Ranking List competitions. The theoretical examination may be taken at the Officials Seminar.
- The questions are asked and must be answered in English and the candidate must satisfy the examiner that he is capable of discussion in this language.
- The pass mark is 80%.
- The candidate is not allowed to refer to any rulebooks or notes.

18.4. Practical examination

Level 2 Drivers exams cannot be held at Titled or RC competitions.

The candidate is required to drive part of all 3 events during the competition. However, he must drive skiers of the minimum standard as reported below.

The Chief Judge and the Driver of the competition will receive a questionnaire issued by the Europe & Africa TC, concerning the driver's ability, general attitude, knowledge of speed control, willingness of work etc. which must be completed and sent to the Europe & Africa TC.

Minimum results of skiers in the driver exam competition:

	Tricks	Slalom	Jump
Men	4000 points	6@16m & 4@14.25m (58 kph)	43m
Women	3200 points	6@16m & 4@14.25m (55 kph)	31m

18.5. Renewal of qualification

To maintain their status, Level 1 Drivers will need to attend at least every 3 years at the Official Seminar (e.g. seminar attendance in 2010, next seminar attendance in 2013), and will be reevaluated either by test or peer review every 3 years (e.g. exam in 2010, next test in 2013).

By special request National Federations may take on the responsibility of ensuring their Level 2 Drivers are trained and evaluated at a National Seminar under the supervision of a designated official approved by the TC.

19. Official Seminar

International Officials for the purpose of this rule are Level 1 and Level 2 Officials.

19.1. Responsibility and purpose

The TC is responsible for organizing an annual Officials Seminar.

The purpose of this Seminar is to provide:

1. further education in judging and scoring,
2. information on the latest rule changes and their interpretation,
3. practical trick writing, judging and scoring,
4. a trick writing and scoring evaluation.
5. further education in homologation and driving,
6. information and demonstrations on the latest technology associated with their responsibilities,
7. information on the latest rule changes and their interpretation.

19.2. Attendance

- a. **Mandatory Attendance:** Any Level 1 or Level 2 Official who wishes to inscribe himself for any World or Europe & Africa titled event or Cash Prize 1 competition in any year **MUST** have attended one seminar within the previous 3 years (e.g. Seminar 2010 followed by Seminar 2013). If, however, an official attends the Seminar in the current year he may become eligible to officiate at titled or CP1 events in that current year if there are spaces. At the Seminar, a short written exam will be held.
- b. All International Officials are encouraged to take part in the Officials Seminar as often as possible to increase their knowledge.
- c. Level 3 Officials are welcome to attend. If they pass their International Official exam in the same year their attendance at the Seminar is valid for 3 years.

Note: In order to qualify as “attended” an official must attend the majority of sessions during the Seminar. This will be monitored at each session.

19.3. Exam availability

Theoretical and Practical Exam facilities for Level 1 Judge and Level 2 Judge qualification will be made available at every Seminar.

Theoretical Exam facilities for other officials (Homologator, Driver and Scorer) will be made available at every Seminar. Practical exams will still have to be taken at events.

19.4. Date and venue

Federations wishing to host the Seminar should apply in writing to the TC who will, as far as is possible, announce dates and venues at least two years in advance of each Seminar.

The venue should move around the Confederation, offering an equal chance to officials from all countries to attend. This will be taken into account when allocating Seminar venues. The date should be in spring or autumn of any year.

19.5. Costs

Each individual attending the Seminar is responsible for his own costs of travel and accommodation.

Confederation Europe & Africa will contribute to the cost of meeting rooms and lecture facilities.

20. Level 3 Officials (J3, J3*, D3, D3*, S3 and H3)

Qualification	Qualified in events
Level 3 Judge (J3 – J3*)	J3 - 3 event qualification (Slalom, Tricks & Jump) J3* - Slalom & Jump
Level 3 Drivers (D3 – D3*)	D3 - 3 event qualification (Slalom, Tricks & Jump) D3* - Slalom & Tricks
Level 3 Scorer (S3)	3 event qualification only (Slalom, Tricks & Jump)
Level 3 Homologator (H3)	3 event qualification only (Slalom, Tricks & Jump)

20.1. Responsibility

A Level 3 Official is responsible to and the responsibility of his Federation.

20.2. Rights

When appointed to an International competition a Level 3 Official is entitled to such rights and reimbursements of expenses as are specified in the Bye-Laws, Obligations and Additional Rules.

20.3. Cards

Cards will be issued and renewed at the discretion of the National Official's Federation.

20.4. Functions

Level 3 Officials are qualified to function only in their home country. If requested, the E&A TC may grant special exceptions.

1. Level 3 Judges are qualified to function at Normal and Ranking List homologation competitions, in the event in which they are qualified. (ref. to E&A Additional Rules art. 19 and art. 20)
2. Level 3 Homologators are qualified to function at Normal homologation competitions.
3. Level 3 Scorers are qualified to function at Normal and Ranking List homologation competitions. (ref. to E&A Additional Rules art. 19 and art. 20)
4. Level 3 Drivers are qualified to function at Normal and Ranking List homologation competitions. (ref. to E&A Additional Rules art. 19 and art. 20)

20.5. Appointment to panels

A Level 3 Officials may be appointed to the panel of a National or International competition by his Federation.

20.6. Examinations

Federations are solely responsible for the examination and appointment of Level 3 Officials.

Appendix C of the Additional Rules gives guidance on the conduct of examinations and the standards that should be required.

20.7. List of National officials

Each Federation shall send the TC a list of its Level 3 Officials before the 1st March each year and update the list during the season. Only those Officials appearing on the list will be considered by the TC as qualified Level 3 Officials for the purpose of the homologation of competitions.

20.8. Training resources

The Tournament Council has prepared a set of training resources which can be used by National Federations to train officials. These are available at <http://iwwfeatc.com> under the Officials tab.

These include instruction in each of the three events, video trick training, etc.

Also available on request are exam papers which National Federations may use if they wish. The Federation will need to contact the E&A TC for further information.

21. Homologation of competitions

21.1. Levels of homologation

There are 3 levels of Homologation: Normal (N) (Rule 19), Ranking List (L) and Record Capability (R) (Rule 20)

21.2. Requirements

- a. The requirements in the Europe & Africa Homologation Dossier shall be considered to be Additional Rules and apply to all levels of homologation.
- b. Competitions of 2 or 3 events must have at least 15 competitors in total. Competitions of 1 event must have at least 8 competitors. If these numbers are not met, the homologation level for that event will be limited to NORMAL.
- c. For all levels of homologation, the slalom and jump courses must be checked by theodolite.
- d. For all levels of homologation, the jump set-up and measurement must be by computer. For the jump set up camera and test buoy must be checked by theodolite.
- e. If using Boettcher jump measurement, the software that must be used is the one where the coordinates of the camera and the buoys are calculated by the survey of the Homologator.
- f. Computer programmes for jump measurement must be tested against the benchmarks in the IWWF Technical Rules and against any tests issued by Europe & Africa.
- g. The term “Confederational Standard” used in the IWWF Technical Rules unless otherwise stated refers to a competent person.

Homologators may apply to the TC for a higher homologation standard than planned if all the necessary criteria are met. Such intention to apply for a higher homologation level must be clearly shown in the remarks area of the homologation notice. The Europe & Africa TC decision will be final.

21.3. File and data submission

The Homologation Dossier, Ranking List Data, Results and video must be sent as shown in the IWWF Rulebook and in Additional Rule within 30 days of the end of the competition. If the data are received after the 7th November, the competition will not be listed as homologated in the current year.

22. Normal Homologation

IWWF Rule 10.7 is not mandatory for Normal Homologation

22.1. Jump

(addition to IWWF Rule 13.10)

Jump distances can be measured by a system of meters measuring the subtended angles provided by 3 meter stations, each consisting of two meters.

To insure accuracy, it is recommended that each meter station be no more than 70m from the point of landing.

Jump distances are to be calculated through the use of a computer. Any computer program used for this purpose must be verified by passing the benchmark tests included in these rules.

The point of landing is defined as the centre of the inscribed circle which is tangent to all three sides of the triangle formed by the three average sightings from the meter stations. The distance is calculated from the landing point back to the ramp. The size of the triangle is defined as the diameter of that inscribed circle.

If the top and bottom sightings from any single meter station are more than 0.6 metre apart at the point of landing, then the average value and the single sighting with the smaller value will each be tried in turn, and whichever of these produces the smaller triangle will be used to derive the official distance.

If the official resolution of a particular set of sightings, according to the above rules, produces an official wide triangle, and that set of sightings included a spread in excess of the 0.6 metre test limit AT ONLY ONE of the meter stations, which yielded the smaller triangle size by using the average rather than the shorter reading alone, then the longer reading from that station may be tried alone, and used as official, if it eliminates the wide triangle.

On a given jump when the diameter of the inscribed circle obtained by the angular measuring system is greater than 0.9 metres, the contestant will have the option to either take the jump over again or accept the shortest distance measured from a corner of the triangle provided that on any of his preceding or following jumps, the measured distance does not exceed the distance to the furthest corner of the large triangle. In the case where one of the preceding or following jumps does exceed the distance to the furthest corner, the official score of the wide triangle jump will be the shortest vertex.

In the case where a competitor decides to take the jump over again, the competitor's distance on the reride may not exceed the distance measured to the furthest corner of the large triangle of the disputed jump but will not be less than the distance measured to the nearest corner of the large triangle of the disputed jump. Multiple rerides are to be resolved sequentially in the order in which they occurred.

For Normal Homologation, the tolerance of the 10 metres buoys are 10m +/- 1m.

22.2. Tricks

(Addition to IWWF Rule 15.11)

Video is not mandatory for Normal Homologation.

Video timing is not mandatory for Normal Homologation.

22.3. Slalom

Timing Charts

The following All Buoy Timing Chart replaces that in the IWWF Rules (where the tolerances are tighter than required for Normal Homologation).

BOAT SPD	Score:	0-0.5	1-1.5	2-2.5	3-3.5	4-4.5	5-5.5	All 6
kph	Fm/To:	E-1	E-2	E-3	E-4	E-5	E-6	E-X
	Fast	1.64	4.15	6.67	9.20	11.73	14.25	15.92
58	Ideal	1.68	4.22	6.77	9.31	11.86	14.40	16.08
	Slow	1.71	4.28	6.84	9.41	11.97	14.53	16.22

	Fast	1.73	4.37	7.03	9.69	12.35	15.02	16.78
55	Ideal	1.77	4.45	7.13	9.82	12.50	15.19	16.95
	Slow	1.80	4.51	7.23	9.93	12.64	15.34	17.12
	Fast	1.83	4.62	7.43	10.24	13.05	15.87	17.72
52	Ideal	1.87	4.71	7.55	10.38	13.22	16.06	17.93
	Slow	1.91	4.78	7.65	10.52	13.39	16.25	18.13
	Fast	1.94	4.90	7.87	10.85	13.83	16.81	18.78
49	Ideal	1.98	5.00	8.01	11.02	14.03	17.04	19.03
	Slow	2.03	5.08	8.13	11.18	14.22	17.27	19.27
	Fast	2.06	5.21	8.37	11.54	14.71	17.88	19.98
46	Ideal	2.11	5.32	8.53	11.74	14.95	18.16	20.27
	Slow	2.16	5.42	8.68	11.93	15.18	18.42	20.56
	Fast	2.20	5.56	8.94	12.33	15.71	19.10	21.34
43	Ideal	2.26	5.69	9.13	12.56	15.99	19.42	21.68
	Slow	2.32	5.81	9.30	12.78	16.27	19.75	22.03
	Fast	2.36	5.97	9.60	13.23	16.86	20.50	22.89
40	Ideal	2.43	6.12	9.81	13.50	17.19	20.88	23.31
	Slow	2.50	6.26	10.02	13.78	17.53	21.27	23.74

Timing shall be from the entrance gate to the boat gate following the buoy at which the last full point is scored in the pass.

Where the applicable speed is slower than allowable, a rerun shall be mandatory. If the pass was not a perfect pass, the skier may not improve his score over that obtained on the slow pass, unless the speed is so slow that it is equal to or below the fast tolerance of the next slower pass. If the pass was a perfect pass (score is 6, skier to continue), the skier may choose to proceed to the next pass instead of repeating the pass. If the skier then makes a perfect pass, he receives credit for both passes. If the pass is missed, he will receive credit for the buoys made as if it were the lower, skipped pass.

OR the following dual segment timing chart may be used.

Dual Segment times are as follows:

Kph	1st Segment			2nd segment		
	Start Gates to Buoy 3			Buoy 3 to End Gates		
	Actual	Min	Max	Actual	Min	Max
58	6.77	6.69	6.84	9.31	9.21	9.42
55	7.13	7.05	7.22	9.82	9.70	9.94
52	7.55	7.45	7.64	10.38	10.26	10.52
49	8.01	7.90	8.12	11.02	10.88	11.17
46	8.53	8.41	8.65	11.74	11.58	11.91
43	9.13	8.99	9.27	12.56	12.37	12.75

The basis of the times is + or - 0.65 kph.

First Segment Timing

An intermediate time for controlling boat speed will be taken on the third buoy.

If a skier's score is 2 1/2 or less on the pass, only this intermediate time taken on the third buoy will be considered.

Timing the Boat

An official shall ride in the boat to check speed with a stopwatch and by observing the water speed measuring devices.

Alternatively, the boat may be timed on shore by a chronometer started and stopped from shore positions at either end of the course or by other automatic timing devices approved by the Tournament

Council. In the event that the time is taken from shore, however, it must be communicated to the boat by radio immediately after each pass.

Where the applicable speed is slower than allowable on any pass, a rerun shall be mandatory. If either time is too slow, a reride is mandatory. If the pass was not a perfect pass, the skier may not improve his score over that obtained on the slow pass, unless the speed is so slow that it is equal to or below the fast tolerance of the next slower pass. One exception to this is, if the skier scores more than 2 1/2 and the 1st segment is fast and the 2nd segment is slow, or the 1st segment is slow and the 2nd segment is fast, a reride is mandatory but the skier may improve his score. If the pass was a perfect pass (score is 6, skier to continue), the skier may choose to proceed to the next pass instead of repeating the pass. If the skier then makes a perfect pass, he receives credit for both passes. If the pass is missed, he will receive credit for the buoys made as if it were the lower, skipped pass.

If the skier's score is greater than 2 1/2 and the 1st segment time is good but the 2nd segment is slow, he may choose to accept a score of 2 1/2 instead of the mandatory reride.

Where the speed is faster than allowable and the skier has not made a perfect pass, he shall have the option of a reride but shall not be scored less than the score obtained on the pass leading to the reride. If the skier has an imperfect pass, the boat judge shall determine, by appropriate means, whether the skier wishes to take a rerun. If a rerun is to be taken, the boat shall immediately return through the course in an unscored pass; and the rerun shall then follow in the original direction through the course.

Boat Times and Reride Situations

1st	2nd	2 1/2 or less	3-6 w/miss	6 no miss
OK	OK	-	-	-
OK	S	-	MR or 2 1/2+	MR, 2 1/2+, Go Up
OK	F	-	OR	-
F	OK	OR	OR	-
F	S	OR	MR* or 2 1/2+	MR, 2 1/2+, Go Up
F	F	OR	OR	-
S	OK	MR	MR	MR, Go Up
S	S	MR	MR	MR, Go Up
S	F	MR	MR*	MR, Go Up

OK=Good Time

F=Fast

S=Slow

Go Up=Skier Option to Continue

--Score Stands As it is

OR=Optional Reride, score not to decrease

MR=Mandatory Reride, refer to paragraph 4

MR*=Mandatory Reride, score may improve

2 1/2+=Protected score of 2 1/2

22.4. E&A Normal Tournament Standards

IWWF Rules 14.15 and 14.03 are not mandatory for Normal Homologation

Homologation Level	Normal (N)			
Prior Announcement	No			
Valid For	Inclusion of results in the Europe & Africa Ranking Lists to a maximum of the scores below			
The maximum scores which may be included in the Europe & Africa Ranking List and for the purposes of entry qualification and seeding to the draw.	Men	6 @ 58k/14.25m 6 @ 55k/14.25m	4000 points	40 metres
	Women	4 @ 55/14.25m	3250 points	29 metres
Confederation Approved Panel	Appointed by organisers as per rules			

22. Normal Homologation

Number of Rounds	A maximum of 4 rounds may be held.
Chief Judge	Level 2 Judge (3 or 2 event depending on events being held)
Homologator	Level 3 Homologator
Scorer	Level 3 Scorer
Driver	Level 3 Driver
Duplication	Any duplication of duties by the Chief Judges, Homologator, Scorer or Driver is limited to two functions but this should be avoided if possible.
Speed Control	Not mandatory – Recommended
Video tape submission	Not required
Homologation dossier	To E&A www.iwwfed-ea.org
WST file (RL scores)	To E&A www.iwwfed-ea.org
WSK file (Competition file)	To E&A www.iwwfed-ea.org
SLALOM (N)	
Course Check	2 meter survey (see note 2)
Slalom Course	No single centre line floating courses except of approved design see note 3
Tolerances	Normal Per Rule Book (RL x 2 except Average width)
Buoys	Measured
Timing	May be by stopwatch
End Course Video	Not mandatory
Judging Towers	both sides perfect sight – One tower may be a boat
Optional judging method (3 judges)	2 gate and scoring judges may be on a centrally located tower (between buoys 3 and 4) on one side of the lake, using gate video feeds.
Judges	5 Level 3 Judges, or if gate video installed 3 Level 3 Judges
Backup timer	Stopwatch - None needed with Speed Control
TRICKS (N)	
Course Check	Visual – the pre-start buoys are not required.
Tolerances	Per Rule Book
Timing	semi-automatic timing 20s.
Video	Not mandatory
Judges	5 Level 3 Judges, or 3 Level 3 Judges, if immediate review is available.
Timer	Appointed by Chief judge
JUMP (N)	
Course Check	2 meter survey (see note 2)
Tolerances	Normal Per Rule Book (L x 2 except the ramp angle)
Timing	May be by stopwatch
Protractors	.25 degrees min - .25m radius
Difference on a fixed point	.2 degrees Maximum
Jump Measurement	Meter stations
Distance Calculation	Computer
Program Check	YES
Judges	3 Level 3 Judges If the video jump is used, the two shore judges may act as video judges provided they can see the full jump course.
Backup Timer	Not needed with Speed Control

23. Record Capability and Ranking List Homologation

23.1 IWWF Record Capability and Ranking List Tournament Standards

(must conform to IWWF homologation standards)

	World Record	Ranking List
Prior Announcement	YES, see E&A Additional Rule 7	YES, see E&A Additional Rule 7
Confed. Approved Panel	Panel elected by E&A TC	Appointed by organisers as per rules
Number of Rounds	4	4
Conflict of Interest Rules	Refer to *4	Refer to *4
Chief Judge	Level 2 Judge	Level 2 Judge
Homologator	Level 1 or Level 2 (only tricks) in his/her Country	Level 1 or Level 2 in his/her Country
Scorer	Level 1 Scorer	Level 3 Scorer minimum
Driver	Level 1 Driver	Level 3 Driver minimum
Duplication of duty	Any combination of two of the following positions may be held without conflict: Chief Judge/Driver/Scorer/Homologator/Judge (Refer to *6)	
SLALOM		
Course Check	SURVEY*2	SURVEY*2
Slalom Course	no single centre line floating courses except of approved design*3	no single centre line floating courses except of approved design*3
Tolerances	Per Rule Book	Per Rule Book
Buoys	Measured	Measured
Timing	Automatic	Automatic
End Course Video	Required	Required
Video method	Minimum 1/6th screen width of end buoys, 1/3 recommended	Minimum 1/6th screen width of end buoys, 1/3 recommended
Boat Video	Required	Not Required
End Course Video submission	Required	Required
Gate Video	Required	Not Required
Judging Towers	both sides perfect sight	both sides perfect sight
Judges	5 Level 2 or 3 Level 2	minimum 3 Level 2 and 2 Level 3 or minimum 2 Level 2 and 1 Level 3
Backup timer	Not Applicable	Not Applicable
TRICKS		
Course Check	Visual	Visual
Tolerances	Per Rule Book	Per Rule Book
Timing	Video Timing	Video Timing
Video	YES	YES
Video submission	Required	Not Required
Judges	5 Level 2 or if immediate review available 3 Level 2 See Rule 15.11	minimum 3 Level 2 and 2 Level 3 or if immediate review available minimum 2 Level 2 and 1 Level 3 See Rule 15.11
Timer	top 2 ratings	top 3 ratings
JUMP		
Course Check	SURVEY*2	SURVEY*2
Tolerances	Per Rule Book	Per Rule Book
Timing	Automatic	Automatic
Video Jump Measurement	Required	Required

Distance Calculation	COMPUTER	COMPUTER
Program Check	YES	YES
Judges	3 Level 2	minimum 2 Level 2 and 1 Level 3
Video Judges	Level 2	minimum 1 Level 2 and 1 Level 3
Backup Timer	Not Applicable	Not Applicable
Speed Control	Required	Required
End Course Video subm.	Required	Not required
Homologation Dossier	IWWF Electronic Dossier Required	IWWF Electronic Dossier Required

*2 Two stations surveys are allowed for class L and lower. 3 stations or a 1 station with laser range finder survey are the only acceptable methods for R tournaments. For a 1 station survey, angle only spot checks from a second position are recommended.

*3 For a single center line course to be used, the buoy support structure must be rigid. The buoy support structure is independent of the cable, but attached to it. The structure must guarantee that the line of the three buoys is perpendicular to the wire. The center cable must be taut to assure a straight line. Please refer to additional material detailing this design in [Diagram 8](#).

*4 No conflict of interest allowed for and Cash Prize tournaments. and L tournament no conflict of interest is allowed unless it is not possible to run the tournament according to the rules, (i.e. no properly qualified official available without a conflict of interest), in this case at least one-half of the Appointed Judges shall have no conflict of interest with any skier competing in the event. If a conflict of interest exists, the appointed official so affected shall not rule.

Official's Conflict of Interest:

Conflicts of interest, as defined by the following:

(1) An official for an event shall have no conflict of interest with respect to any skier competing in that event. For this purpose, "official" shall include boat drivers, event judges, scorers and all secondary positions.

A conflict of interest shall be regarded as existing if the official is:

(1) A member of the immediate family of a contestant, to include lineal descendants and ancestors, brothers, sisters, and spouses of the contestant or any of the above family members.

(2) In a position, which may give the appearance of a lack of independence. These conflicts shall be determined by the Chief Judge with respect to event officials and by the Appointed Judges with respect to the Chief Judge and other appointed officials.

*6 Duplication of duties: (Chief Judge, Scorer, Homologator and Driver)

Chief Judge may also be a panel Judge or, if qualified, be the Homologator.

Homologator, if qualified, may also be a panel Judge or the Scorer.

Scorer, if qualified, may also be a panel Judge or the Homologator.

Driver: A driver cannot have 2 roles in the same event, (cannot be at the same time: Driver and Judge, Driver and Scorer or Driver and Homologator), but can have, if qualified, different roles in different events.

Where the duplication causes a conflict, the final decision will be taken by the simple majority of the event Judges.

Any duplication of duties is limited to two functions but should be avoided if possible.

No duplication is permitted for Level 3 Officials.

23.2. Homologation fees

A homologation fee must be paid by the organizing Federation to Europe & Africa prior to the checking of the dossier by the TC. The fees are set by the Europe & Africa Admincom.

One National Championships per Federation is exempt from the fee. If this Championship is held as more than one competition only the final competition is exempt.

NOTE

For full details of the technical requirements for each level of homologation see the Europe & Africa Homologation Rules and Guidelines.

24. Europe & Africa Records

24.1. General

- a. Unless varied below the provisions of IWWF Technical Rule 16 apply to Europe & Africa records.
- b. Records will only be recognised for the Men and Women divisions and not for Under 14, Under 17, Under 21 or Senior categories.
- c. Only performances at events of competitions in Europe & Africa which are granted Record Capability homologation by the TC or events in competitions in other Confederations recognised by the TC to be of Record Capability level will be considered for ratification.
- d. A Europe & Africa record may not equal or exceed a World Record unless it is ratified as a World record.
- e. No Federation shall ratify a National Record if it equals or exceeds the current World or Europe & Africa Record, unless it is also ratified as a World or Europe & Africa record.

24.2. Claims

- a. The Record Application form, the Record Dossier, the Homologation Dossier and the relevant videotapes must be submitted within 7 days in accordance with the instructions on the front cover of the Record Dossier.
- b. In the case of a claimed National Record the Chief Judge and the Homologator shall, on request, supply any information or documentation required by the skier's Federation.

25. Europe & Africa Championships Best Performances

The Europe & Africa Tournament Council will publish annually a list of the best performances (highest scores) ever set at the following Europe & Africa Championships in the Male and Female categories:

The Europe & Africa Individual Championships

The Europe & Africa Under 21 Championships

The Europe & Africa Under 17 Championships

The Europe & Africa Under 14 Championships

The Europe & Africa 35 + Championships

The Europe & Africa 45 + Championships

The Europe & Africa 55 + Championships

The Europe & Africa 65 + Championships

26. Europe & Africa Ranking Lists

26.1. General

- The Europe & Africa Ranking Lists are prepared by the TC from the performances of Europe & Africa skiers in the published results of qualifying events.
- From Record or List Homologated Competitions all performances will be included.
- From Normal Homologated Competitions scores, will be limited to the maximums shown below. These are also the maximum scores that may be used for the purposes of entry qualification and seeding to the draw at a titled competition.

Men	6 @ 58k/14.25m or 6 @ 55k/14.25m	4000 points	40 metres
Women	4 @ 55/14.25m	3250 points	29 metres

- The Open and Under 21 Lists will not be able to accommodate scores in slalom lower than 58 kph for men and 55 kph for women.
- If a performance equals or exceeds a Europe & Africa Record the TC will decide whether or not it will be included or limited.

26.2. Qualifying events

- Qualifying events at competitions are:
- Events at competitions in Europe & Africa that have been listed as homologated in the current Ranking List year to at least Normal Homologation level (see score restrictions above).
- Events at competitions in other Confederations of at least Ranking List level provided the performances by Europe & Africa skiers have been sent to the TC by the IWWF in sufficient time.

26.3. Events

Ranking lists will be published for Slalom, Tricks, Jump and Overall.

Provided adequate skier data is acquired Lists will also be published for the Age Categories – Under 14, Under 17, Under 21 and all 35+ categories

Overall points will be calculated only from a single round of a three events tournament.

26.4. Publication & Ranking List year

The current year E&A Ranking List, is computed annually on the 31st October.

These lists are calculated from results achieved up until October 31st each year. There are no interim lists which can be applied.

Example:

The current Year Ranking List for 2017, is the list approved at 31st October 2016 and includes all scores achieved from November 1st 2015 to October 31st 2016.

27. Medals and Titles

27.1. General

The medals for titled events will be presented annually under the responsibility of the President of Europe & Africa.

27.2. Europe & Africa Championships

Skier and Team Medals according to the following chart

Category	Slalom	Tricks	Jump	Overall
Men	G / S / B	G / S / B	G / S / B	G / S / B
Women	G / S / B	G / S / B	G / S / B	G / S / B
Team	G / S / B for 6 team members, 1 officials and 1 Federation			

1 Gold each to Chief Judge, Assistant Chief Judge, 6 Judges, Homologator, Scorer, Assistant Scorer, 2 Drivers and 1 Technical Officer. Maximum 5 Gold to Organisers.

27.3. Europe & Africa Youth Championships

Skier and Team Medals according to the following chart

Category	Slalom	Tricks	Jump	Overall
Under 14 Boys	G / S / B	G / S / B	G / S / B	G / S / B
Under 14 Girls	G / S / B	G / S / B	G / S / B	G / S / B
Under 17 Boys	G / S / B	G / S / B	G / S / B	G / S / B
Under 17 Girls	G / S / B	G / S / B	G / S / B	G / S / B
Team Combined Under 14 and Under 17	G / S / B boxed for Federation			
Team Under 14	G / S / B for 4 team members and one team official and 1 Federation			
Team Under 17	G / S / B for 4 team members and one team official and 1 Federation			

1 Gold each to Chief Judge, Assistant Chief Judge, 6 Judges, Homologator, Scorer, Assistant Scorer, **2 Drivers** and 1 Technical Officer. Maximum 5 Gold to Organisers.

27.4. Europe & Africa under 21 Championships

Skier and Team Medals according to the following chart

Category	Slalom	Tricks	Jump	Overall
Under 21 Men	G / S / B	G / S / B	G / S / B	G / S / B
Under 21 Women	G / S / B	G / S / B	G / S / B	G / S / B
Team Under 21	G / S / B for 6 team members, 1 officials and 1 Federation			

1 Gold each to Chief Judge, Assistant Chief Judge, 6 Judges, Homologator, Scorer, 2 Drivers and 1 Technical Officer. Maximum 5 Gold to Organisers.

27.5. Europe & Africa 35+ Championships

Skier and Team Medals according to the following chart

Category	Slalom	Tricks	Jump	Overall
35 – 44 Ladies	G / S / B	G / S / B	G / S / B	G / S / B
45 – 54 Ladies	G / S / B	G / S / B	G / S / B	G / S / B
55 - 64 Ladies	G / S / B	G / S / B	G / S / B	G / S / B
65 + Ladies	G / S / B (blank)	G / S / B (blank)	G / S / B (blank)	G / S / B (blank)
35 – 44 Men	G / S / B	G / S / B	G / S / B	G / S / B
45 – 54 Men	G / S / B	G / S / B	G / S / B	G / S / B
55 - 64Men	G / S / B	G / S / B	G / S / B	G / S / B
65 + Men	G / S / B (blank)	G / S / B (blank)	G / S / B (blank)	G / S / B (blank)
Team Combined	G / S / B for 10 team members, 1 official and 1 Federation			

Note blank medals are provided for these categories due to possible lack of entries in this age category. The organiser should arrange engraving as necessary according to the final number of entries.

1 Gold each to Chief Judge, Assistant Chief Judge, 6 Judges, Homologator, a Scorer, an Assistant Scorer, **2 Drivers** and 1 Technical Officer. Maximum 5 Gold to Organisers.

28. Europe & Africa Policies and Procedures

This section is included to notify officials of Europe & Africa Policies and Procedures that are not readily contained elsewhere in these Additional Rules or the IWWF Technical Rule Book.

28.1. Medical Cover

(in addition to IWWF rule 7)

At all water ski competitions entered on the Europe & Africa calendar there must be qualified first aid personnel present on site during the whole time of the competition. Qualifications must be valid in the country where the competition is held.

A suitably equipped medical station must be provided at the tournament site.

It is Europe & Africa policy never to start a competition without medical cover.

28.2. Rescue Team

(in addition to IWWF rule 7)

A rescue team must be present during the whole competition and may operate from a boat or from the shore as deemed appropriate to the site.

It is Europe & Africa policy never to start a competition without a rescue team present.

28.3. Reports on Officials

The Chief Judge of any Europe & Africa Calendar Competition is requested to notify the President of the Europe & Africa TC if there are any problems with the performances or behaviour of Officials during the event.

Equally if an Official believes the Chief Judge has not acted correctly at a competition then a report should be sent to the President of the Europe & Africa TC.

28.4. Titled Events Reporting

The Chief Judge of every Europe & Africa Titled Event is requested to send in a written report to the President of the Europe & Africa TC at the conclusion of the competition. This report should include a brief overview of the event, site, organization, etc. and a detailed report on any problems or incidents that occurred.

Additionally, there is an Excel spreadsheet which the Chief Judge needs to complete and return to the Europe & Africa TC. This spreadsheet will contain an analysis of the performance of each of the officials in their different roles during the competition. The results of this performance evaluation will stay confidential within the TC. All Titled Events Chief Judges will be provided with the form prior to the event.

28.5. Officials Leave of Absence

Any Europe & Africa Official may request a leave of absence from duty for a season. Such request should be put in writing to the President of the Europe & Africa TC as early as possible and give reasons for the request. Such reasons may include additional workload; pregnancy, illness, family pressures, etc.

28.6. Resolving ties – Europe & Africa interpretation

Ties at the end of the final round

1st Place: At the end of the FINAL round, if there is a tie for 1st place it shall be run off.

2nd and 3rd places: At the end of the FINAL round, if there is a tie for 2nd or 3rd place the skier with the higher preliminary round score shall be placed highest. If the score from the preliminary round is the same, then placement will be decided by a run off.

Ties and placement resolution during the Run Offs

In the run off for 1st place, all skiers tied for first place shall run off to determine the new placements of those “x” skiers. If after this run off there is still a tie for 1st place, further run offs shall be held for those tied skiers, until such time as there are no more ties for 1st place.

During the 1st place run offs if ties emerge for 2nd or 3rd places these ties shall be resolved by using the preliminary round scores of the skiers involved in the tie. If the prelim round scores are the same, then the placement will be decided by a separate run off

During the 1st place run offs if ties emerge for any place (other than 1st, 2nd or 3rd place), these ties shall be resolved by using the preliminary round scores of the skiers involved in the tie. If the prelim round scores are the same, then the placement will be shared.

The same principles apply equally for run offs to determine 2nd and/or 3rd places.

Each run off shall have a new drawing for order.

28.7 Slalom Scoring

The skier shall have the option of selecting the starting speed and rope length. If the rope length selected is less than 18.25m and the speed is less than the maximum for the division, then the skier will proceed at that rope length until the maximum speed is reached.

The skier will be credited with all buoys from each pass waived or skied up to and including his last perfect pass plus the number of buoys scored on his last incomplete pass, if any.

When a skier starts with a rope length shorter than 18.25m, for all passes below maximum speed, scoring will be as if the skier had used an 18.25m rope.

Example

Open men division			Open men division			Open men division		
minimum starting speed 43			minimum starting speed 43			minimum starting speed 43		
Pass 1	49/16,00	score 6	Pass 1	52/16,00	score 4	Pass 1	55/16,00	score 6
Pass 2	52/16,00	score 6	Final score 4,00@43/18,25			Pass 2	58/16,00	score 6
Pass 3	55/16,00	score 4				Pass 3	58/14,25	score 6
Final score 4,00@55/18,25						Pass 4	58/13,00	score 3
						Final score 3,00@58/13,00		

28.8 Slalom times and procedure

“Concerns IWWF Rule 14.03”

For competitions in Europe & Africa the IWWF Rule 14.03 “The recorded time will be communicated to the Judge's Stand by radio” shall be applied only to the last pass of the skier.

For intermediate passes “6 buoys time OK” will be enough.

In between each pass of a skier, the Boat Judge and the Boat Driver will double check themselves. The Judge will communicate to the Driver the speed and rope length. The Driver will confirm the speed and rope length. This will be announced to the Judges tower before each pass. The Tower must confirm this communication.

29. Boat Testing and Eligibility

29.1. Boat eligibility

a. For World Titled Competitions held in Europe & Africa

Only those boat models currently listed as eligible by the IWWF Tournament Council in accordance with the IWWF Towboat Policy and Procedure are eligible for use at World titled competition held in Europe & Africa.

b. For Europe & Africa Titled Events

Any boat model that has been tested and approved as a Tournament ski boat in any IWWF Confederation either in the current year or previous years and has not, in the opinion of Europe & Africa TC, subsequently been significantly modified is normally eligible for use at a Europe & Africa titled competition. However, the TC has the right to declare ineligible any boat model tested and approved by another Confederation if it feels the boat is, for any reason, unsuitable for use at an Europe & Africa titled competition.

c. For other Homologated Events in Europe & Africa

Any boat passed by the Homologator as complying with IWWF Technical Rule 10.01 is eligible for use at these competitions.

29.2. Europe & Africa testing procedure

Under the IWWF Towboat Policy and Procedure boats may only be tested in their Confederation of main manufacture. The procedure for testing in Europe & Africa is as follows:

- a. A boat manufacturer may apply to the Europe & Africa TC for a specific model of boat to be tested. The application must include a brochure giving full specifications and pictures and details of at least 2 homologated competitions where the specific model has been used.
- b. The manufacturer will propose a site where there is a slalom and jump course. This site will normally be in the country of manufacture. Provided the Europe & Africa TC approves the site, the manufacturer will make the necessary arrangements and make any payment required for the use of the site.
- c. The manufacturer will propose at least 2 skiers who can run the slalom course on 12m line, jump at least 50 metres and score at least 6000 points in tricks and, provided the Europe & Africa TC approves the skiers, will make the necessary arrangements and pay any expenses involved.
- d. The Europe & Africa TC will appoint one of its members (or a Level 2 Judge) and an Level 1 Driver as the testers. Alternatively, the TC may delegate the responsibility of carrying out the test to a National Federation, provided it is satisfied the testing will follow the guidelines of the IWWF. All expenses of the testers will be paid by the manufacturers.
- e. A date and time, agreeable to all parties concerned, will be arranged.
- f. The boat will be tested for the criteria of performance laid down by the IWWF, but the actual methods of testing will be decided by the Europe & Africa TC.

29.3. Europe & Africa approval procedure

- a. The testers will send a full report to the Europe & Africa TC who will decide, at its next meeting, whether or not to grant preliminary approval and will notify the manufacturer.
- b. To consider definitive approval the TC will also require reports from the Chief Judges of at least 2 homologated competitions where the specific model of boat has been used. At the next meeting, following receipt of the reports, the TC will decide whether or not to grant definitive approval and will notify the manufacturer.
- c. Definitive approval applies only to the specific model of boat tested. Should any change(s) be made subsequently to the size, hull shape, engine power, etc., these must be reported by the manufacturer to the Europe & Africa TC immediately. If, in the opinion of the TC, the change(s) are likely to have significantly altered the performance of the boat, it will be deemed to be a new model and a new application for testing must be made by the manufacturer.

29.4. Europe & Africa charges

The charges to the manufacturers are set by the Europe & Africa Admincom and available on request.

30. Disciplinary Procedures

Applies to Judges – Scorers - Drivers - Homologators

All disciplinary procedures and actions must comply with the bylaw articles regarding ineligibility of participation, grievance, and due process. These procedures are not intended for the occasional honest mistake, only for those habitually breaking the rules.

With each step, written approval of two-thirds of the Appointed Officials is required to take action against an official, and this approval must be recorded and included in the report to the Tournament Council as specified below.

First Offense to Be but Not Limited To:

- On-site notification and warning by the Appointed Officials with written report of action to TC Chairman.

The record of this offense will be removed from the official's file in one year from the date of infraction provided no further offenses occur.

Second Offense to Be but Not Limited To:

- Letter of reprimand from the entire Council.
- Not to officiate at any Record Capability or Ranking List events for 6 months after the date of the letter of reprimand, with written report of action to Admincom.

Providing no further offenses occur, and without removing the record of this offense from the official's file, the time limit on this offense for further discipline will end two years from the date of infraction.

Third Offense to Be but Not Limited To:

- Letter from the Europe & Africa President.
- Downgrade mandatory with written report of action to Admincom.

Providing no further offenses occur, and without removing the record of this offense from the official's file, the time limit on this offense for further discipline will end three years from the date of infraction and the official may start work from the beginning on the rating lost.

The following are examples of violations, but are not all-inclusive:

All Officials:	<ol style="list-style-type: none"> 1. Not following the rules in order to enhance skier performance or site reputation by <ul style="list-style-type: none"> • abusing any tolerance (IWWF Rule 1.11); • allowing abuse of any tolerance without reporting it or taking corrective action, if appropriate. 2. Not following the rules after having been notified of the problem. 3. Knowing the rules were not followed and not reporting it. 4. Engaging in verbal or physical abuse of other officials or tournament personnel.
Judges:	<ol style="list-style-type: none"> 1. Manipulating the timing in tricks to give the skier more or less than 20 seconds. 2. Knowing that the speed was wrong and not reporting it. 3. Knowing that the boat path was wrong and not reporting it.
Scorers:	<ol style="list-style-type: none"> 1. Intentionally giving a skier or group of skiers a better or worse score in any event or overall. 2. Manipulating the points and credits in scoring tricks to produce more or less points for a skier or group of skiers.
Drivers:	Driving to enhance skier performance with <ul style="list-style-type: none"> • consistently slow times during a Slalom event with one or a group of skiers; • a boat path consistently favouring or disfavouring one or a group of skiers; • consistently fast times during a Jump event with one or a group of skiers.
Homologators:	Setting up the ski site in violation of the rules to enhance skier performance by <ul style="list-style-type: none"> • setting slalom courses too narrow; • allowing the use of excessively long slalom towropes; • allowing timing systems to be operated without prior checking; • filling out record application forms incorrectly; • setting up the ramp incorrectly.

Appendix A – Championships Overall Formulas

Rounding of Points - Overall points are to be rounded to 2 decimal points for each event.

Under-14

- For Tricks: skiers best event score X 1000 / Best Overall Skiers score
 For Slalom: skiers best event score X 1000 / Best Overall Skiers score
 (score from 46/18,25 for Girls - score from 49/18,25 for Boys)
 Jump Boys: ((skiers best event score - 10m) X 1000) / (Best Overall Skiers score - 10m)
 Jump Girls: ((skiers best event score - 7m) X 1000) / (Best Overall Skiers score - 7m)

Under-17

- For Tricks: skiers best event score X 1000 / Best Overall Skiers score
 For Slalom: skiers best event score X 1000 / Best Overall Skiers score
 (score from 49/18,25 for Girls - score from 52/18,25 for Boys)
 Jump Boys: ((skiers best event score - 20m) X 1000) / (Best Overall Skiers score - 20m)
 Jump Girls: ((skiers best event score - 13m) X 1000) / (Best Overall Skiers score - 13m)

Under-21, Open

- For Tricks: skiers best event score X 1000 / Best Overall Skiers score
 For Slalom: ((skiers best event score +12) X 1000) / (Best Overall Skiers score + 12)
 (score from 55/18,25 for Women - score from 58/18,25 for Men)
 For a skier to receive credit for these extra 12 points, he must have successfully completed his first pass (see Rule [14.01](#)).
 Jump Men: ((skiers best event score - 25m) X 1000) / (Best Overall Skiers score - 25m)
 Jump Women: ((skiers best event score - 17m) X 1000) / (Best Overall Skiers score - 17m)

35+, 45+, 55+ and 65+

- For Tricks: Skiers best event score X 1000 / Best overall Skiers score
 Slalom: Skiers best event score X 1000 / Best overall Skiers score
 35+: (score from 52/18,25 for Women - score from 55/18,25 for Men)
 45+: (score from 49/18,25 for Women - score from 52/18,25 for Men)
 55+: (score from 43/18,25 for Women - score from 46/18,25 for Men)
 65+: (score from 40/18,25 for Women - score from 43/18,25 for Men)
 Jump: **35+ Women: ((Skiers best event score – 7) x 1000) / (Best overall Skiers score –7))**
35+ Men: ((Skiers best event score – 20) x 1000) / (Best overall Skiers score –20))
45+ Women: Skiers best event score x 1000 / Best overall Skiers score
45+ Men: ((Skiers best event score – 15) x 1000) / (Best overall Skiers score –15))
55+ Women: ((Skiers best event score + 5) x 1000) / (Best overall Skiers score + 5))
55+ Men: ((Skiers best event score – 10) x 1000) / (Best overall Skiers score – 10))
65+ Women: ((Skiers best event score +10) x 1000) / (Best overall Skiers score +10))
65+ Men: Skiers best event score x 1000 / Best overall Skiers score

A skier overall score in jumping shall not be reduced below zero.

Appendix B – Ranking List Overall Score Basis and Formulas**B.1. Ranking List Overall Score Basis**

	Under-10 Boys	U-12 Boys	U-14 Boys	
Slalom	1.00@49/13.00 (67 buoys)	2.50@55/12.00 (74.50 buoys)	2.00@55/11.25 (56 buoys)	
Trick	4000	6180	6630	
Jump	21.9	25.0	35.3	
	U-10 Girls	U-12 Girls	U-14 Girls	
Slalom	1.00@49/14.25 (61 buoys)	5.75@52/14.25 (65.75 buoys)	2.00@52/11.25 (56 buoys)	
Trick	2720	4800	5300	
Jump	11.4	25.0	27.0	
	Open, Junior, U21 Men		Open, Junior, U21 Women	
Slalom	1@9.75 (49 buoys)		1@10.25/55 (43 buoys)	
Trick	11680		8580	
Jump	67.8		50.5	
	35+ Men	45+ Men	55+ Men	65+ Men
Slalom	1@10.25 (43 buoys)	3@10.75 (45 buoys)	5@11.25 (53 buoys)	2@11.25 (50 buoys)
Trick	11100	5400	3200	3000
Jump	60.7	53.0	46.0	33.0
	35+ Women	45+ Women	55+ Women	65+ Women
Slalom	2@11.25 (38 buoys)	2@11.25 (44 buoys)	2@11.25 (50 buoys)	4@14.25 (34 buoys)
Trick	6000	4200	3700	2100
Jump	41.7	38.0	34.4	18.3

B.2. Ranking List Overall Formulas

Rounding of Points - Overall points are to be rounded to 2 decimal points for each event.

Under-10

For Tricks: Skiers Score X 1000 / Ranking List Overall Score Basis

For Slalom: Skiers Score X 1000 / Ranking List Overall Score Basis
(score from 25/18,25 for Girls - score from 25/18,25 for Boys)

Jump Boys: Skiers Score X 1000 / Ranking List Overall Score Basis

Jump Girls: ((Skiers Score + 10) X 1000) / (Ranking List Overall Score Basis +10)

Under-12

For Tricks: Skiers Score X 1000 / Ranking List Overall Score Basis

For Slalom: Skiers Score X 1000 / Ranking List Overall Score Basis
(score from 25/18,25 for Girls - score from 25/18,25 for Boys)

Jump Boys: Skiers Score X 1000 / Ranking List Overall Score Basis

Jump Girls: Skiers Score X 1000 / Ranking List Overall Score Basis

Under-14

For Tricks: Skiers Score X 1000 / Ranking List Overall Score Basis

For Slalom: Skiers Score X 1000 / Ranking List Overall Score Basis
(score from 40/18,25 for Girls - score from 43/18,25 for Boys)

Jump Boys: ((Skiers Score - 10m) X 1000) / (Ranking List Overall Score Basis - 10m)

Jump Girls: ((Skiers Score - 7m) X 1000) / (Ranking List Overall Score Basis - 7m)

Under-17

For Tricks: Skiers Score X 1000 / Ranking List Overall Score Basis

**For Slalom: ((Skiers Score) X 1000) / (Ranking List Overall Score Basis + 12)
(score from 49/18.25 for Girls and 52/18.25 for Boys)**

Jump Boys: ((Skiers Score - 25m) X 1000) / Ranking List Overall Score Basis - 25m

Jump Girls: ((Skiers Score - 17m) X 1000) / Ranking List Overall Score Basis - 17m

Under-21 - Open

For Tricks: Skiers Score X 1000 / Ranking List Overall Score Basis

For Slalom: ((Skiers Score + 12) X 1000) / (Ranking List Overall Score Basis + 12)
(score from 55/18.25 for Women and 58/18.25 for Men)

Jump Men: ((Skiers Score - 25m) X 1000) / (Ranking List Overall Score Basis - 25m)

Jump Women: ((Skiers Score - 17m) X 1000) / (Ranking List Overall Score Basis - 17m)

35+, 45+, 55+ and 65+

For Tricks: Skiers Score X 1000 / Ranking List Overall Score Basis

Slalom: Skiers score X 1000 / Ranking List Overall Score Basis

35+: (Buoy count from 52/18,25 for Women - 55/18,25 for Men)

45+: (Buoy count from 49/18,25 for Women - 52/18,25 for Men)

55+: (Buoy count from 43/18,25 for Women - 46/18,25 for Men)

65+: (Buoy count from 40/18,25 for Women - 43/18,25 for Men)

Jump: 35+ Women: ((Skier score – 7) x 1000) / (Ranking List Overall Score Basis – 7))

35+ Men: ((Skier score – 20) x 1000) / (Ranking List Overall Score Basis – 20))

45+ Women: Skier score x 1000 / Ranking List Overall Score Basis

45+ Men: ((Skier score – 15) x 1000) / (Ranking List Overall Score Basis – 15))

55+ Women: ((Skier score + 5) x 1000) / (Ranking List Overall Score Basis + 5))

55+ Men: ((Skier score – 10) x 1000) / (Ranking List Overall Score Basis – 10))

65+ Women: ((Skier score +10) x 1000) / (Ranking List Overall Score Basis + 10))

65+ Men: Skier score x 1000 / Ranking List Overall Score Basis

A skier overall score in jumping shall not be reduced below zero.

Appendix C - Advice To Federations for National Officials

1. General

The examinations should be organised similarly to those for International Officials in Additional Rules 11, 13, 14 and 15 but require lower minimum standards as specified below. The examiners should be experienced International Officials. Applications for examination should only be accepted from candidates who have had sufficient experience as assistant officials at competitions and who the Federation believes would carry out their duties and apply the rules with complete impartiality.

2. Minimum standard

- a) Level 3 Judges
Sufficient knowledge of the IWWF Technical Rules and Europe & Africa Additional Rules to judge at Normal homologation competitions and ability to read Tricks to a minimum standard of 1800 point passes – complete runs of 3500 minimums.
- b) Level 3 Judges*
Sufficient knowledge of the IWWF Technical Rules and Europe & Africa Additional Rules to judge at Normal homologation competitions in the Slalom and Jump Events.
- c) Level 3 Homologator
Sufficient knowledge of the IWWF Technical Rules and Europe & Africa Additional Rules and Homologation Rules and Guidelines and practical experience to demonstrate that he could homologate a Normal homologation competition unsupervised.
- d) Level 3 Scorer
Sufficient knowledge of the IWWF Technical Rules and Europe & Africa Additional Rules applying to calculation, memory of trick values and practical experience to demonstrate he could calculate the results of a Normal homologation competition unsupervised.
- e) Level 3 Driver
Sufficient knowledge of the IWWF Technical Rules and Europe & Africa Additional Rules applying to drivers and driving experience to demonstrate he could drive all events of a Ranking List competition.
- f) Level 3 Driver*
Sufficient knowledge of the IWWF Technical Rules and Europe & Africa Additional Rules applying to drivers and driving experience to demonstrate he could drive Slalom and Tricks at Ranking List competition.

The E&A Tournament Council and Development Committee have produced training materials for National level officials. These files are downloadable from the <http://iwwfeatc.com/> website.

Exam papers and exam videos are also available for Federations to use to qualify their own officials. Please contact E&A TC for further information.

Appendix E – List of Approved Speed Control Systems

The following versions are in current use:

**ZERO OFF APPROVED SOFTWARE
VERSION NUMBER
USA WATER SKI
(Revised 07/15/2017)**

ZO with ECI SINGLE PUCK

<u>BOAT MANUFACTURER</u>	<u>ZO SOFTWARE VERSION w/ ECI SINGLE PUCK</u>
CENTURION	E1886401R
MALIBU	E1886401R (ZO Display) E1886402R (Malibu Display)
MASTERCRAFT	E1886401R
NAUTIQUE	E1886400R (5.3L & 6.2L engines) E1886480R (5.7L engine) E1886490R (6.0L engine)

ZO with GARMIN DUAL PUCKS

<u>BOAT MANUFACTURER</u>	<u>ZO SOFTWARE VERSION w/ GARMIN DUAL PUCKS</u>
CENTURION	E1886205R (latest) E1886102R
MALIBU	E1886256R (latest)
MASTERCRAFT	E1886205R (latest) E1886204R E1886203R E1886102R
NAUTIQUE	E1886303R (latest - Linc Display) E1886302R E1886203R (latest - ZO Head Unit) E1886202R

Boettcher Cruise Control

Appendix F – End Course Monitoring

End Course Video

IWWF rule 14.15: End Course Video

End-course video shall be recorded for the slalom event **for all passes ~~11.25m and shorter~~**. A rigidly mounted video camera shall be operated from a point on the centreline on at least one end of the slalom course, adjusted to show all of the boat guides in clear focus, and equipped with optical (not digital) magnification of sufficient power to display the far entrance/exit gate occupying at least 1/6th of the full width of the screen (1/3 width or larger is recommended).

To help the Organiser and the Officials, Confederation E&A has bought the rights for "SplashEye Slalom End Course Tracking". This software allows Officials to easily verify slalom boat path in real-time.

For the proper functioning of the software the far gates must occupy a minimum 1/3 of screen width

What is needed: A computer, a USB Video capture device, two targets for the boat and the software. For the computer specification, to purchase the USB Video Capture device and boat targets or to download the software please contact Donal Connolly: info@splasheye.com

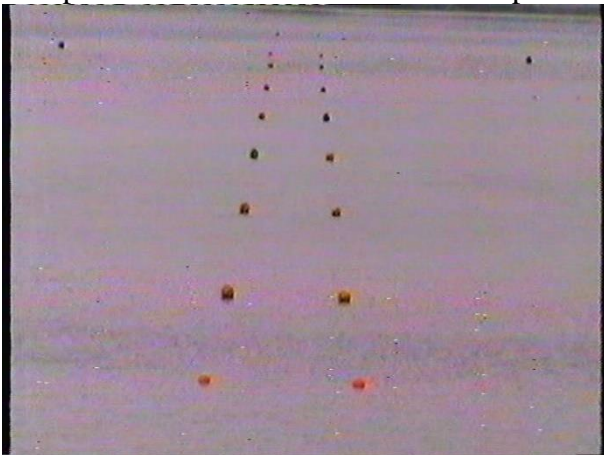
All the information for the installation and use of the system is available at the following links.

Demonstration: <https://www.youtube.com/watch?v=YXwcUpGLjMA>

Calibration: <https://www.youtube.com/watch?v=q7ru7jclIXQ>

Setup: <https://www.youtube.com/watch?v=WducKw3r-Fs>

Example of incorrect end course camera placement



Camera too high and not enough zoom



Not enough zoom and image too grainy



Not enough zoom



Not enough zoom and image too grainy

Examples of correct end course camera placement



End course picture

Before the start of the competition, the Homologator must take a picture of the monitor on the Jury tower where the end course is displayed. The picture must also include the edges of the monitor, so that the gate size ratio can be calculated. The picture has to be emailed to endcourse@splasheye.com in the subject line enter the competition code.

It is the responsibility of the Homologator to physically make and send the end course picture before the start of the competition. The Homologator who fails to do so may incur in a Disciplinary Procedure as described in art. 27.

Examples of correct end course picture (edges of the monitor visible)



Examples of incorrect end course picture



Edges of the monitor not visible



Edges of the monitor not visible
camera to high

Appendix G – File Uploading System

1) Using Command Line FTP

Open a Command Window and type the following:

C:\Users>	Type ftp -i 81.31.66.231	Enter ←
-----------	------------------------------------	-------------------

You will see the following:

Connected to 81.31.66.231. 220 ProFTPD 1.3.5 Server (NETGEAR ReadyNAS) [81.31.66.231] User (81.31.66.231:(none)):	Type VideoUpload	Enter ←
--	----------------------------	-------------------

Then you will see the password prompt below:

331 Password required for VideoUpload Password:	Type EAVideoUpload (make sure the letters shown in Upper Case are enter that way).	Enter ←
--	---	-------------------

If the password is entered correctly, you will see the message below:

230 User VideoUpload logged in	Type cd VideoUpload	Enter ←
---------------------------------------	-------------------------------	-------------------

Again, make sure the Upper-Case letters are entered that way, and press enter and you will see the following message:

250 CWD command successful	Type mkdir 15EAC999	Enter ←
-----------------------------------	-------------------------------	-------------------

You should see the message below showing that the folder has been created:

257 "/ VideoUpload/15EAC999" - Directory successfully created	You now need to change to the new folder so enter a command like that below using your competition number Type cd 15EAC999	Enter ←
--	--	-------------------

You will see the message below showing you have changed the working directory to your competition folder:

250 CWD command successful

You now need to start uploading your video files. You can upload them one at a time or upload many in one go. To upload a single file, enter a command like that below putting path and file name of the file you wish to upload:

Type put "c:\My Video\xxxxx.avi"	Make sure that you put double quotes around the full path and file name.	Enter ←
--	--	-------------------

You will see the message below to tell you that the file upload has started:

200 PORT command successful 150 Opening ASCII mode data connection for xxxxx.avi

And once the upload is complete you will see the following message:

226 Transfer complete ftp: 194143892 bytes sent in 68.95Seconds 2815.64Kbytes/sec.

To upload many files in one go the all have the extension of .AVI or .MOV, enter a command like below putting the path to your files in double quotes with *.AVI or *.MOV or whatever the extension your files have:

Type put "c:\My Video*.avi"	Make sure that you put double quotes around the full path.	Enter ←
--	--	-------------------

You will see a message like that below:

200 PORT command successful

And then for each file you will see the following messages:

```
150 Opening ASCII mode data connection for xxxxx.avi
226 Transfer complete
ftp: 194143892 bytes sent in 68.95Seconds 2815.64Kbytes/sec.
```

Once the files have all been uploaded you can check that all the files are there by entering the following command:

Type dir		Enter ←
-------------	--	------------

You will see a list like that below showing the files you have uploaded:

```
200 PORT command successful
150 Opening ASCII mode data connection for file list
-rw-rw---- 1 EndCourse users 194140501 Apr 6 11:14 xxxxx.avi
-rw-rw---- 1 EndCourse users 194140501 Apr 6 11:15 xxxxx-1.avi
-rw-rw---- 1 EndCourse users 194140501 Apr 6 11:16 xxxxx-2.avi
226 Transfer complete
ftp: 213 bytes received in 0.00Seconds 213000.00Kbytes/sec.
```

Once you have finished uploading files enter the following command to close the FTP connection:

Type quit		Enter ←
--------------	--	------------

You will see the following message showing that you have disconnected:

You will see a list like that below showing the files you have uploaded:

```
221 Goodbye.
```

Example

```

Microsoft Windows [Version 6.3.9600]
(c) 2013 Microsoft Corporation. All rights reserved.

C:\Users\HTR>ftp -i 81.31.66.231
Connected to 81.31.66.231.
220 ProFTPD 1.3.5 Server (NETGEAR ReadyNAS) [81.31.66.231]
User (81.31.66.231:(none)): VideoUpload
331 Password required for VideoUpload
Password:
230 User VideoUpload logged in
ftp> cd VideoUpload
250 CWD command successful
ftp> mkdir 15EAC996
257 "/VideoUpload/15EAC996" - Directory successfully created
ftp> put "c:\videos\video\1_TB.*"
c:\videos\video\1_TB.*: File not found
ftp> put "c:\video\1_TB.*"
c:\video\1_TB.*: File not found
ftp> put "c:\video\1_TB.mpg"
c:\video\1_TB.mpg: File not found
ftp> put "c:\users\htr\videos\video\1_TB.mpg"
200 PORT command successful
150 Opening ASCII mode data connection for 1_TB.mpg
226 Transfer complete
ftp: 16214214 bytes sent in 19.89Seconds 815.03Kbytes/sec.
ftp> dir
200 PORT command successful
150 Opening ASCII mode data connection for file list
drwxrwx--x 1 VideoUpload users 16 Apr 17 01:07 15EAC995
drwxrwx--x 1 VideoUpload users 0 Apr 17 01:06 15EAC996
drwxrwx--x 1 VideoUpload users 0 Apr 17 00:24 15EAC997
drwxrwx--x 1 VideoUpload users 112 Apr 17 00:27 15EAC998
drwxrwx--x 1 VideoUpload users 0 Apr 16 23:37 15EAC999
-rw-rw---- 1 VideoUpload users 16213918 Apr 17 01:12 1_TB.mpg
-rw-rw---- 1 VideoUpload users 14 Apr 17 00:32 lanUploadTest.txt
226 Transfer complete
ftp: 488 bytes received in 0.06Seconds 7.87Kbytes/sec.
ftp> quit
221 Goodbye.

C:\Users\HTR>

```

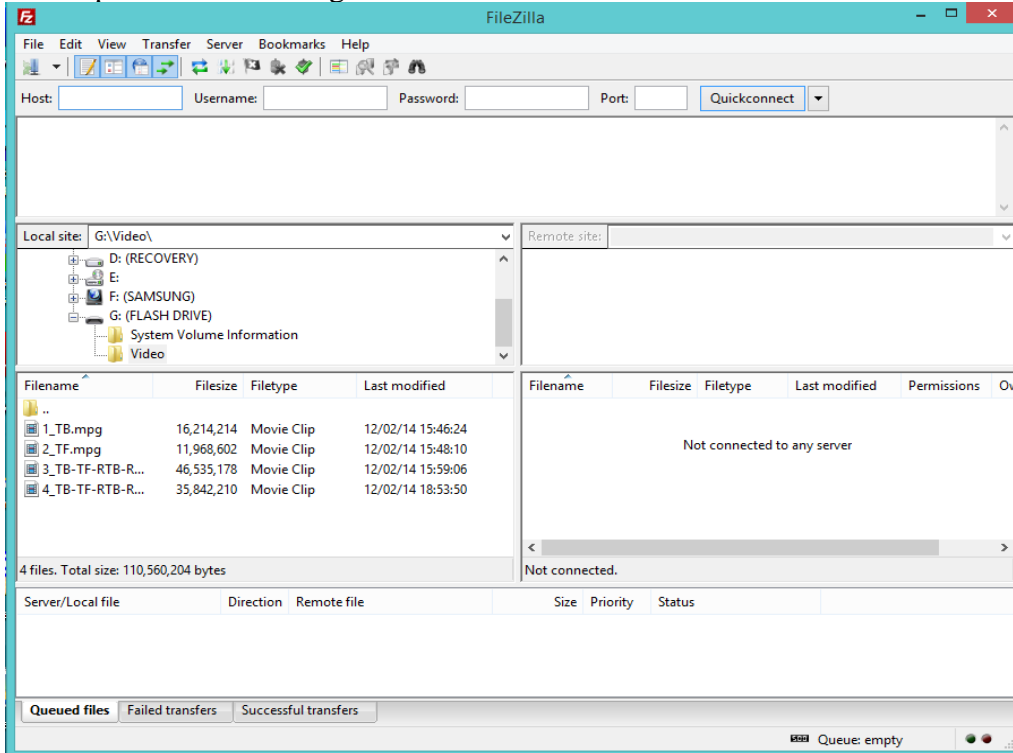
2) Using graphical FTP client

You can use **any graphical FTP client** to upload files to the E&A FTP server. This example is with FileZilla FTP Client 3.10, so some of the screens may look a little different from the client that you use, but in general the process is the same.

Start the FileZilla client and you will see a screen similar to the screen shot below:

It is important to ensure that all speed restrictions are lifted.

Click Transfer>SpeedLimits>Configure

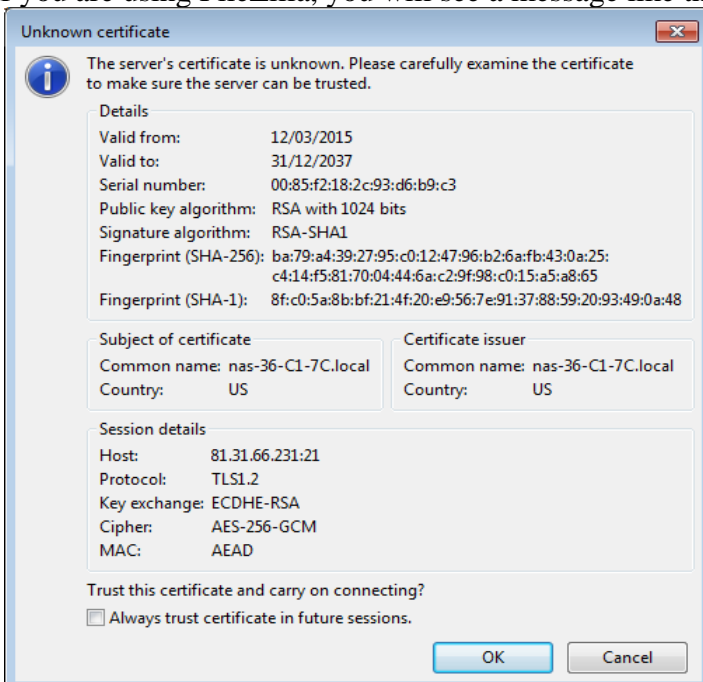


In the Host field type **81.31.66.231**

in the Username field type **VideoUpload**

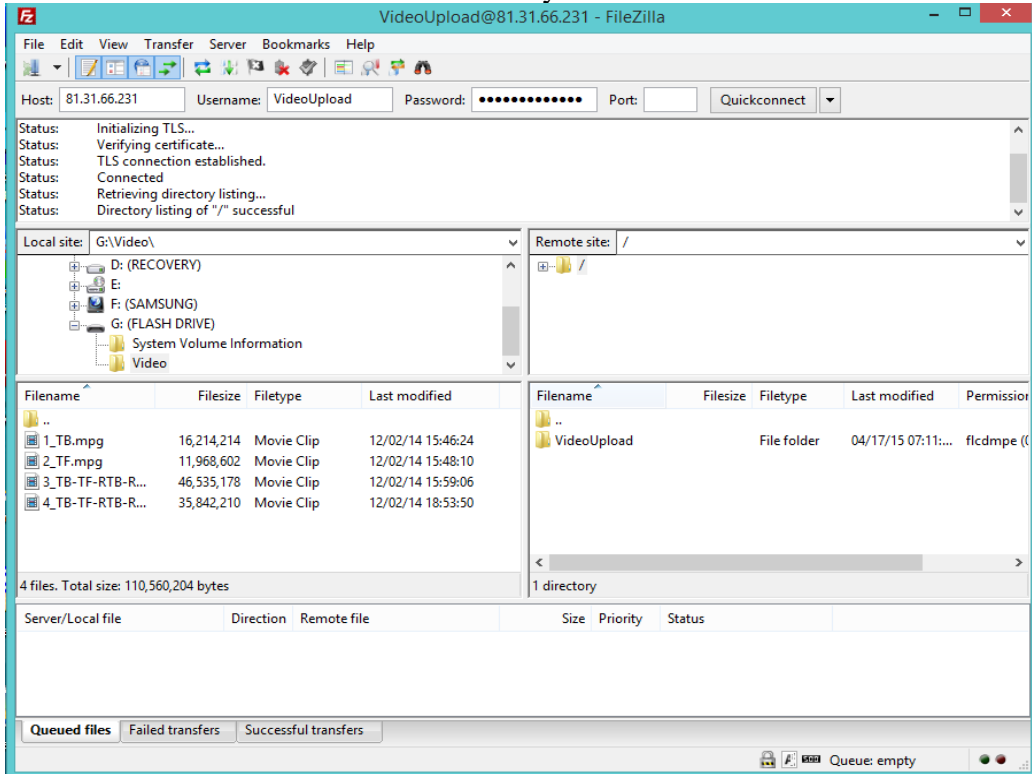
in the password field type **EAVideoUpload** and click the **Quickconnect** button

If you are using FileZilla, you will see a message like that below:



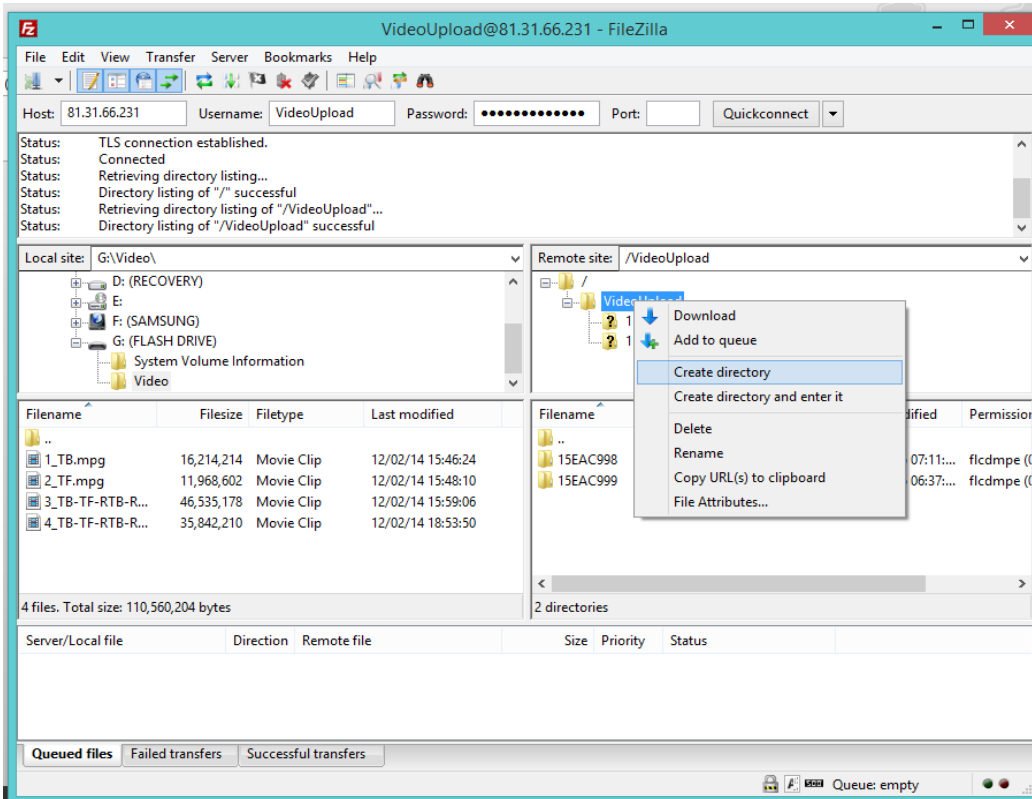
This is because FileZilla has recognised that the FTP server supports secure FTP and is prompting you with the server's certificate information. If your client is not FileZilla and you get prompted with something similar, tick the Always trust certificate in future sessions and click OK.

The FTP client will connect to the server and show you a list of folders on the FTP server like this:

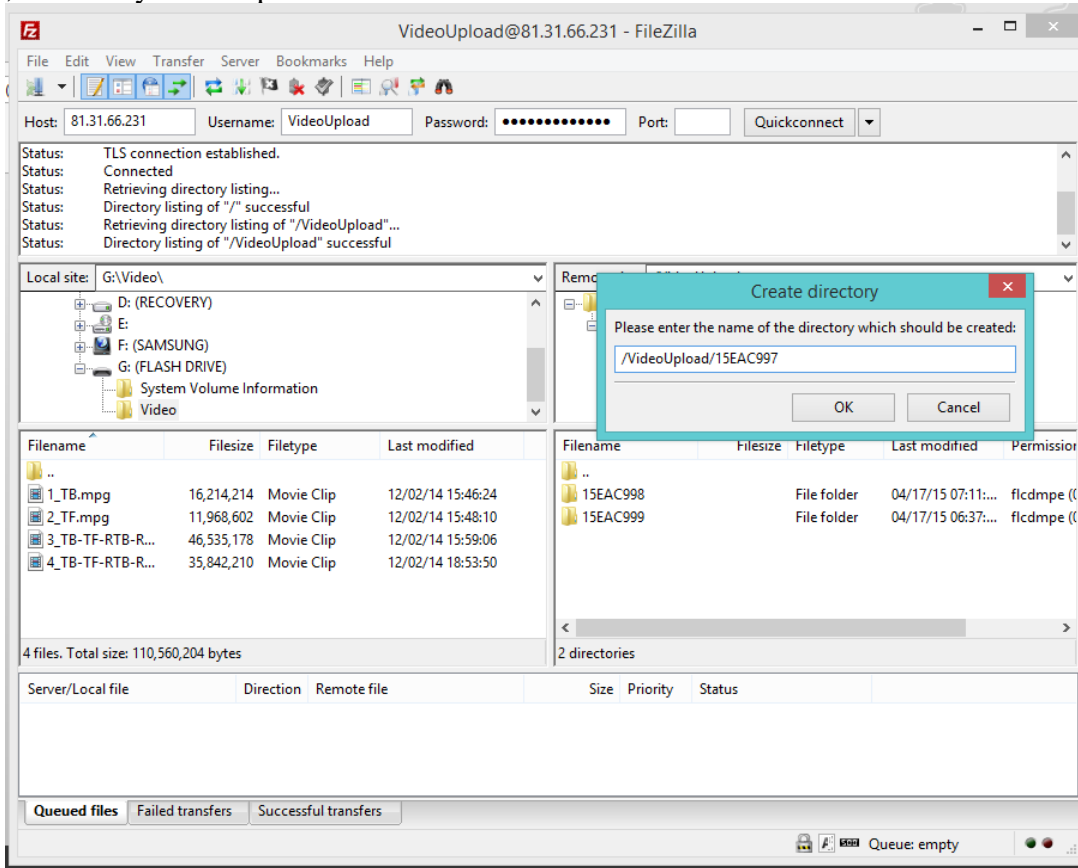


On the right panel, you can see the remote site showing the VideoUpload folder. If you double click on the VideoUpload folder, the client will change to show the folder contents.

Where it shows VideoUpload directory, you now need to create a folder. In FileZilla, you right click in the VideoUpload in the remote site section and select Create Directory. You will see a screen similar to this:

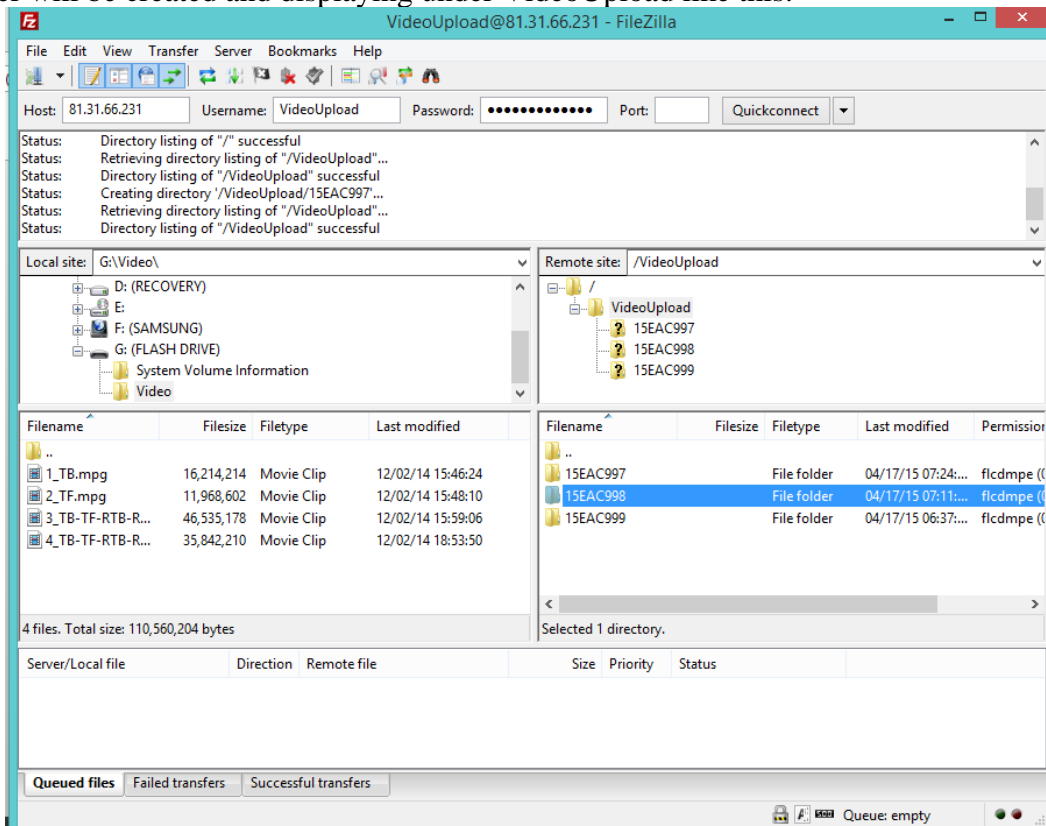


Type the number of your competition replacing the “New directory” test in the window so it looks like this, but with your competition code:



And click OK

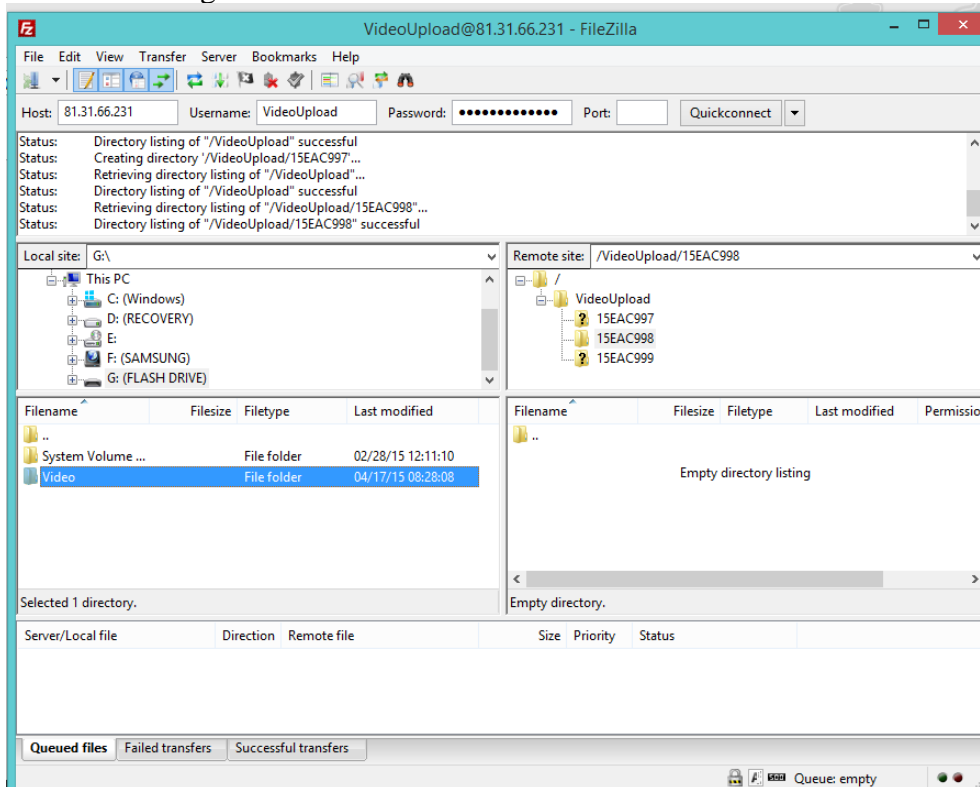
The folder will be created and displaying under VideoUpload like this:



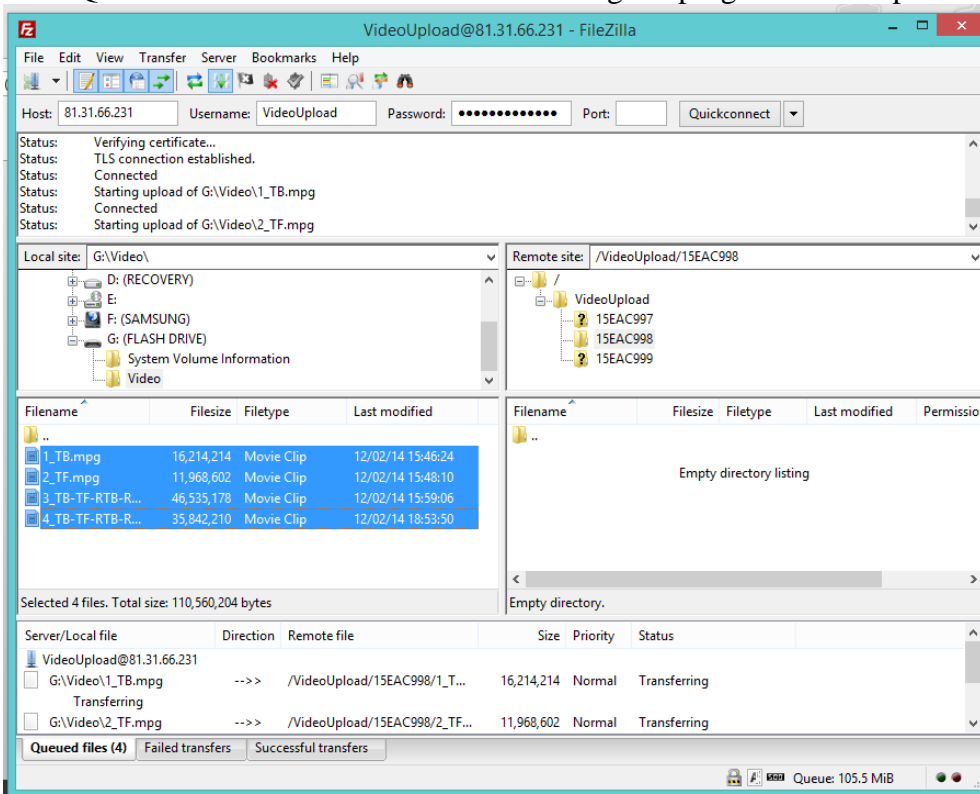
Double click the new folder to open it.

On the left side where it shows Local site, find the folder that contains your End Course video files. And double click it to open it.

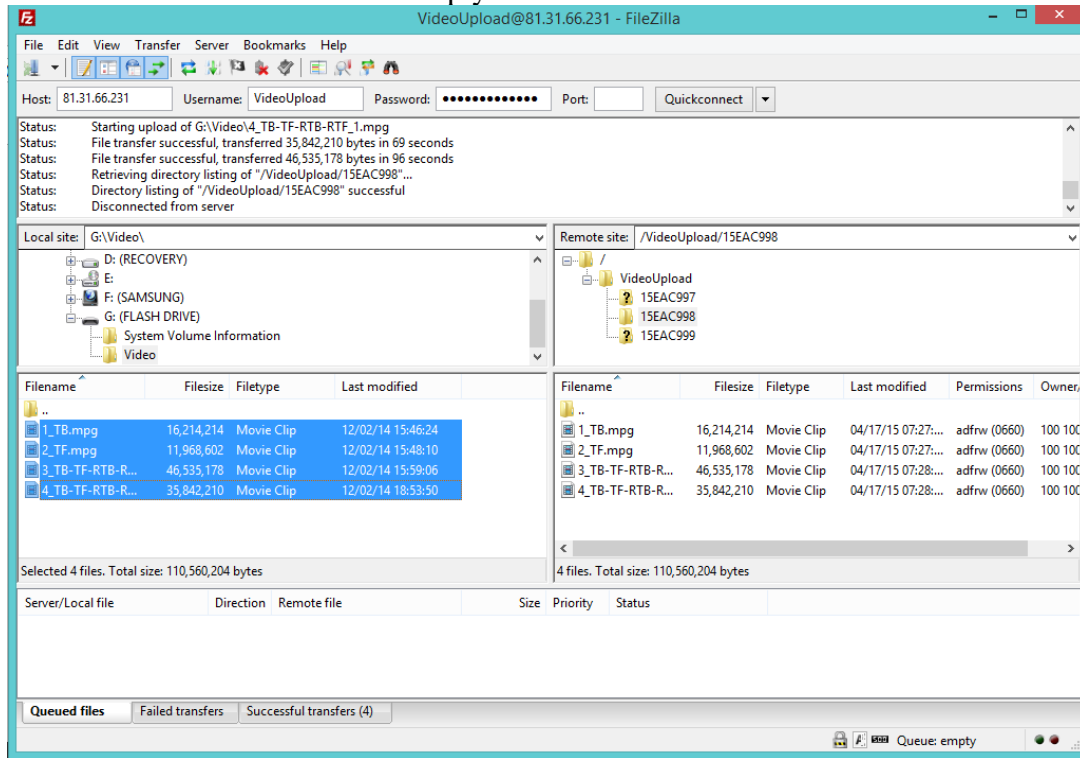
You should have something that looks like this:



With the video files on the left and the empty folder you created on the right. Now select all the files on the left that you want to upload and press enter. FileZilla will then start to upload the files selected. You will see the Queue at the bottom of the screen showing the progress of the upload



Once all the files are uploaded they will be shown on the right in the remote site section like this and the queue section at the bottom will be empty.




Once the upload is complete and you can see that the files were uploaded you can disconnect. In FileZilla, you do that by clicking the Server Menu and selecting Disconnect or by simply closing the FileZilla client.

Appendix H – Administration and Homologation reporting

ATTENTION			
FEDERATION	HOMOLOGATORS	SCORER	CHIEF JUDGES
			ORGANISERS

To ensure continued administration and homologation of our sport, the TC requires certain data from Ranking List and Record Capable tournaments to be shared. Unfortunately, this sometimes is overlooked or incomplete. We hope that the following table will make the situation clearer.

WHAT	WHERE	BY WHO	NOTES	WHEN
Registration of Competition	http://iwwfeatournamentcouncil.asocion.com/	Federation	Include: name, place, date, events, round etc.	ACCORDING TO ADDITIONAL RULE ART. 7
Photo of Slalom End-Course	email to: endcourse@splasheye.com	Homologator	Include the name of the competition in the subject line	BEFORE THE START OF THE TOURNAMENT
Slalom End Course	Send by mail physical media to: Donal Connolly (address on right)	Homologator	Chateau de Poudelay, 09230, France	ASAP AFTER THE END OF THE TOURNAMENT
Homologation Dossier	Upload to: www.iwstournament.com/homologation/UploadDossiers.htm	Homologator or Scorer		
IWWF Ranking List Scores	Upload to: www.iwstournament.com/homologation/IWWFRankingScoresUpload.php	Scorer		
Jump times	email to: b.corson@comcast.com	Scorer	The preferred method is for the Homologator to give the homologation dossier to the scorer. The scorer will incorporate the .hom file into the scoring software and all the files will be published at once	
Scorebook Results PDF or html	Upload to: www.iwstournament.com/homologation/UploadScorebooks.htm	Scorer		
Homologation Dossier	Upload to: www.iwwfed-ea.org	Homologator or Scorer		
IWWF Ranking List Scores	Upload to: www.iwwfed-ea.org	Scorer		
Scorebook Results PDF or html	Upload to: www.iwwfed-ea.org	Scorer		
wst and wsk files	Upload to: www.iwwfed-ea.org	Scorer		
Trcks Video (if required)	Upload to the E&A storage server at ftp 81.31.66.231 Please refer to Appendix F of the E&A additional rules for detailed instructions	It is the Organisers responsibility The CJ shall ensure that this happens	If using the FileZilla client, it is important to ensure that all speed restrictions are lifted. Click Transfer>SpeedLimits>Configure	WITHIN 30 DAYS AND BEFORE OCTOBER 31ST. THERE ARE SANCTIONS FOR NON COMPLIANCE
Jump End Course (if required)				



Name: _____

Bib: _____

Pass 1		Pass 2	
Speed: _____		Speed: _____	
Letter: _____		Letter: _____	
Hydrogate: 0(S) 1 2 3 4 5 6 7 8 9 10(T)	Hydrogate: 0(S) 1 2 3 4 5 6 7 8 9 10(T)	Hydrogate: 0(S) 1 2 3 4 5 6 7 8 9 10(T)	Hydrogate: 0(S) 1 2 3 4 5 6 7 8 9 10(T)
Ballast: 0% 25% 50% 75% 100%	Ballast: 0% 25% 50% 75% 100%	Ballast: 0% 25% 50% 75% 100%	Ballast: 0% 25% 50% 75% 100%
Pos. Tricks: _____		Pos. Tricks: _____	

T

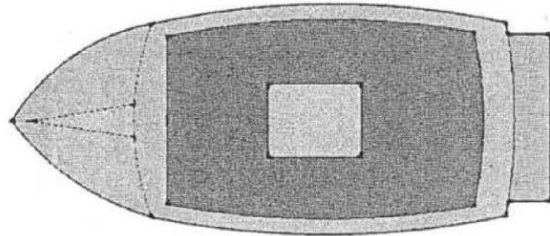
R

I

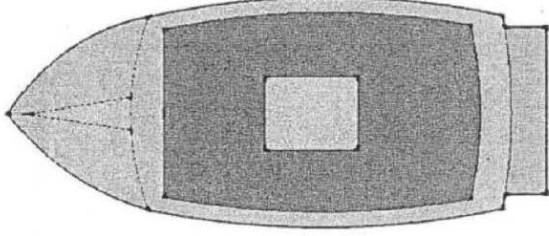
C

K


S



Draw in where you want the buoy



Draw in where you want the buoy



Name: _____

Bib: _____

Pass 1		Pass 2	
Speed: _____		Speed: _____	
Letter: _____		Letter: _____	
Hydrogate: 0(S) 1 2 3 4 5 6 7 8 9 10(T)	Hydrogate: 0(S) 1 2 3 4 5 6 7 8 9 10(T)	Hydrogate: 0(S) 1 2 3 4 5 6 7 8 9 10(T)	Hydrogate: 0(S) 1 2 3 4 5 6 7 8 9 10(T)
Ballast: 0% 25% 50% 75% 100%	Ballast: 0% 25% 50% 75% 100%	Ballast: 0% 25% 50% 75% 100%	Ballast: 0% 25% 50% 75% 100%
Pos. Tricks: _____		Pos. Tricks: _____	

T

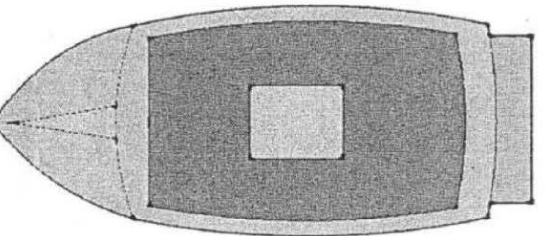
R

I

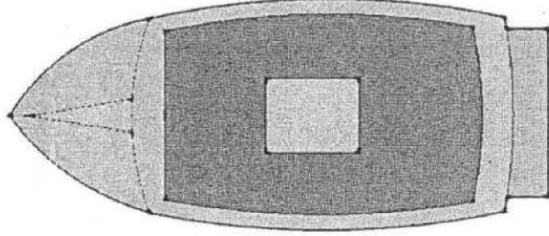
C

K

S



Draw in where you want the buoy



Draw in where you want the buoy

Tricks Timing Chart

Skier _____

Timers _____

	Pass 1	Pass 2
Positional Tricks		
1st Tricks in Time		
3rd to last Tricks in Time		
2nd to last Tricks in Time		
Last Tricks in Time		
Tricks out of Time		

Tricks Timing Chart

Skier _____

Timers _____

	Pass 1	Pass 2
Positional Tricks		
1st Tricks in Time		
3rd to last Tricks in Time		
2nd to last Tricks in Time		
Last Tricks in Time		
Tricks out of Time		

Tricks Timing Chart

Skier _____

Timers _____


	Pass 1	Pass 2
Positional Tricks		
1st Tricks in Time		
3rd to last Tricks in Time		
2nd to last Tricks in Time		
Last Tricks in Time		
Tricks out of Time		

Tricks Timing Chart

Skier _____

Timers _____

	Pass 1	Pass 2
Positional Tricks		
1st Tricks in Time		
3rd to last Tricks in Time		
2nd to last Tricks in Time		
Last Tricks in Time		
Tricks out of Time		

 <small>International Waterski & Wakeboard Federation</small>	Name: _____	Bib: _____
	Speed: _____	

J

Letter: _____

U

Power Factor: _____

Mode:	Slalom	Jump
-------	--------	------

M


Hydrogate

0(s) 1 2 3 4 5 6 7 8 9 10(J)

P

Boat Path: _____

RTB	FAST
-----	------

 <small>International Waterski & Wakeboard Federation</small>	Name: _____	Bib: _____
	Speed: _____	

J

Letter: _____

U

Power Factor: _____

Mode:	Slalom	Jump
-------	--------	------

M

Hydrogate

0(s) 1 2 3 4 5 6 7 8 9 10(J)

P

Boat Path: _____

RTB	FAST
-----	------

